



Ergosoft 16

Highlights





Production & Workflow



Production & Workflow

Summary

JobPresets

This is a new feature, which allows the customer to create templates with various pre-defined parameters related to new job creations.

Print & CutQueues

These modules have been completely re-designed. The newly-created 'workspaces' feature allows the user to arrange the window panes according to their preferences, and save the layout for future use.

QueueManager

The JobCenter is now called QueueManager, and also has been re-designed. Custom Workspaces are supported.

Furthermore, the enhanced view filter feature allows to easily switch between views of queues depending on customer queries. Also, the production database export generates an extended production data report.



Production & Workflow

Summary

Print & Cut Workflows

A new Image Action called Smart Bleed & Cut Lines has been added to the JobComposer.

This allows the user to create contour bleed & cut lines within or around images.

The new Print & Cut Workspace includes improved live cut path previews and the support of new cut path origins (PDF boxes, Adobe Photoshop Paths, bounding box of grouped images.)

Job Costs

The CostManager is a new tool that allows for the centralized management and bulk-editing of all production cost factors.

Overall cost estimation and reporting have been improved.

Expanded Feature Scope Includes:

- Alternative Printer Cost Calculation Method (based on printed area, instead of time printed)
- New Job Properties & Actions Estimate Production Cost
- Job Preflight, Import & Export of Customer Lists into the RIP
- User-definable Currency & Metrics



Production & Workflow

Summary

HotFolder

Various enhancements have been implemented to the HotFolder to meet today's requirements of automated workflows.

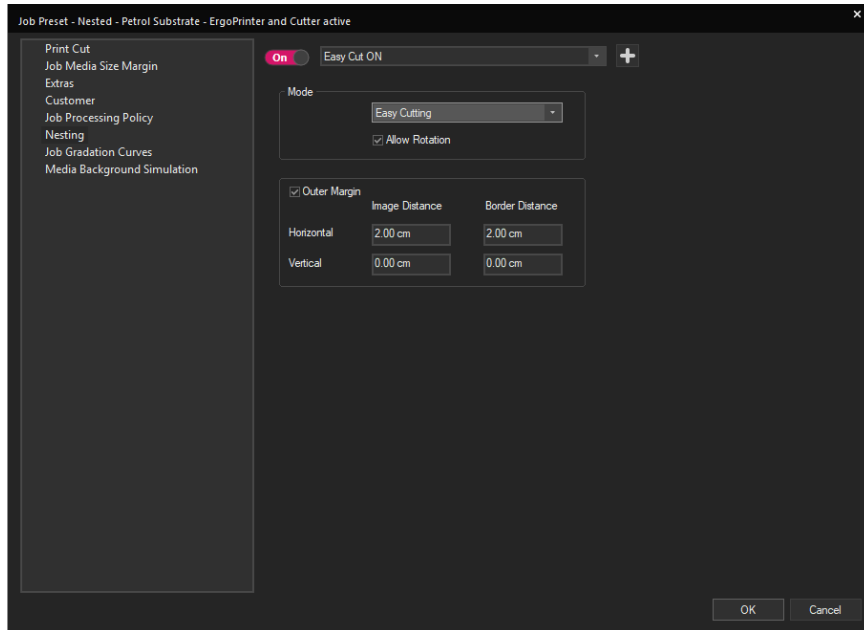
Ergosoft Mosaic Desktops Professional

In cooperation with the company ZEDOnet, a new range of smaller desktop printers are supported through this program. Approximately 300 models of Epson, Canon and HP have been added.



JobPresets ^{*NEW}

Details



To complete the Preset Suite, a composite preset called JobPreset has been added.

The JobPresets allow the user to define numerous parameters of a Job and store them for easy access in the future.

A dropdown of these JobPresets has been added to the JobComposer.

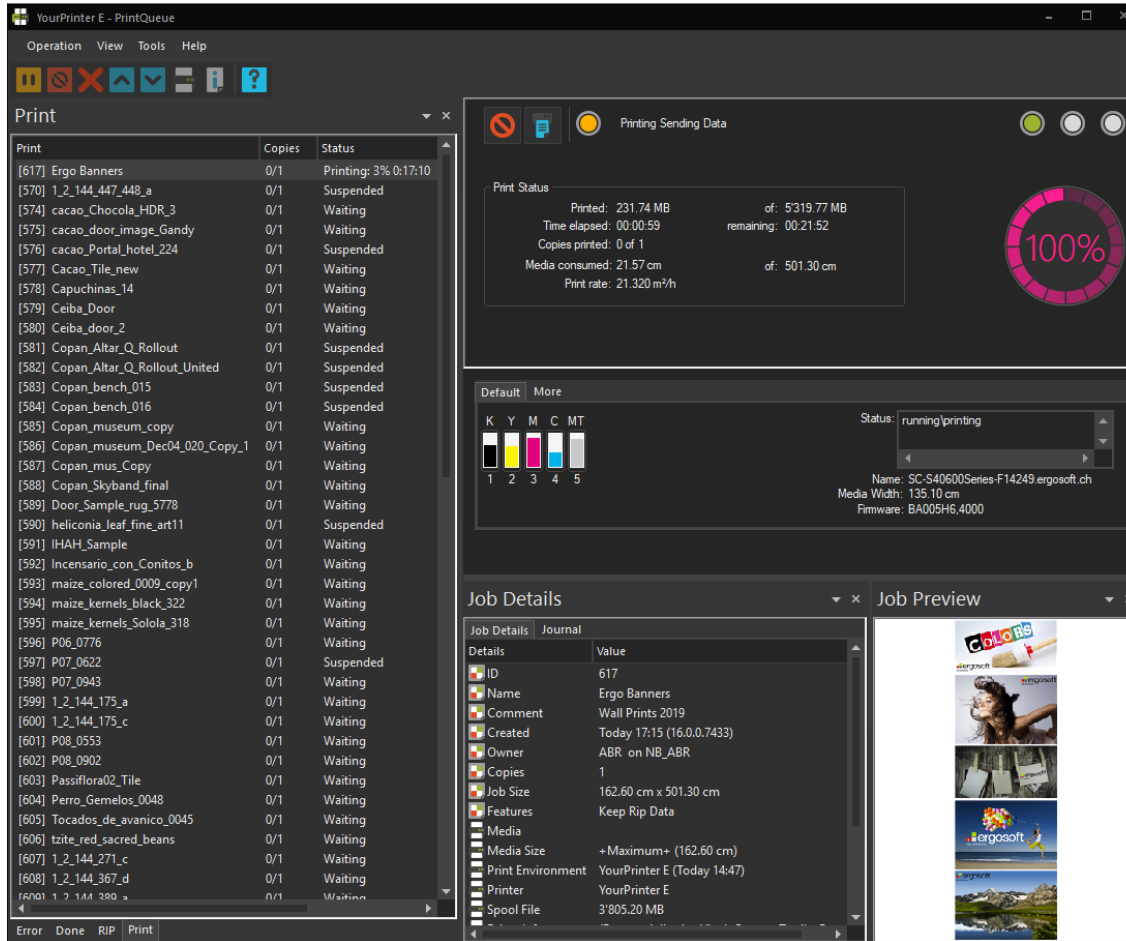
Combined with the ImagePreset, the JobPreset allows the user to pre-define a job creation, especially useful for repeat jobs and high-running products.

The JobPresets are also available through the Ergosoft Delta XML-Automation Interface.



Queues ^{*NEW}

Details



The Print- and CutClients have been completely redesigned.

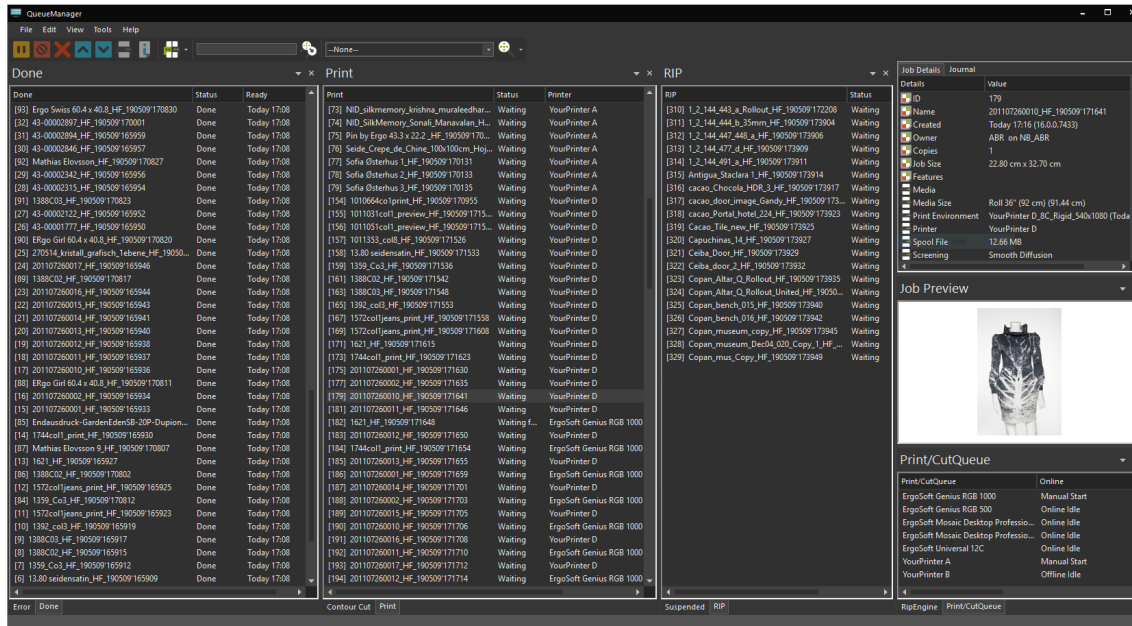
Feature highlights:

- Allows custom workspaces
- Uses pane windows over tiles, which provides a better production overview and job management



QueueManager**NEW*

Details



The JobCenter has been replaced by the newly designed QueueManager.

- Allows custom workspaces **new*
- Uses pane windows over tiles, which provides a better production overview and job management **new*

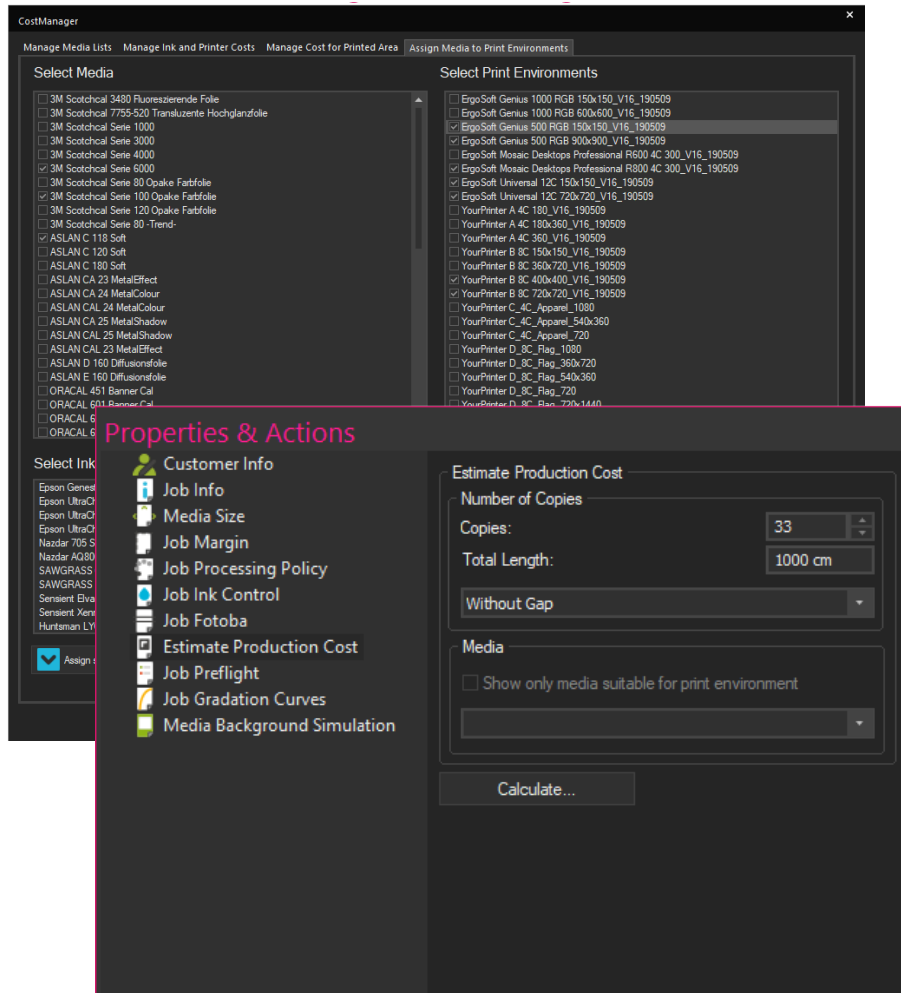
Especially powerful when multiple printer and cutters are connected to one system, or if it is a network Sequoia setup

- Besides production overview, the QueueManager can optionally replace the use of Print and CutQueues entirely. One tool – the QueueManager – can be used for the actual job processing management
- Supports advanced custom filter for various views **new*
- By printer or cutter
- By media
- By Print/CutQueue station
- By time range
- By text string
- Extended production data export functionality **new*



Job Costs ^{*NEW}

Details



Job cost configuration, estimation and calculation has been redesigned and enhanced. New tools have been added.

CostManager: Allows for the administration of production cost parameters of the cost estimation and calculation. ^{*new}

- Through bulk-editing of ink, media and Print Environment assignments, it makes this administration extremely fast
- Accessible through the ControlCenter and the JobComposer
- Import material lists and costs for ink and media

Estimate Production Cost: A new Job Property within the JobComposer that generates estimation reports of the job's production costs. ^{*new}

- Optional: Print Cost Calculation based on m2 per hour over time spent for a job ^{*new}

Job Preflight: Allows user to generate numerous variations of preflights. ^{*new}

Customer List: A new list import functionality allows the user to import the customer data of third party databases (e.g. CRM/ERP/..).

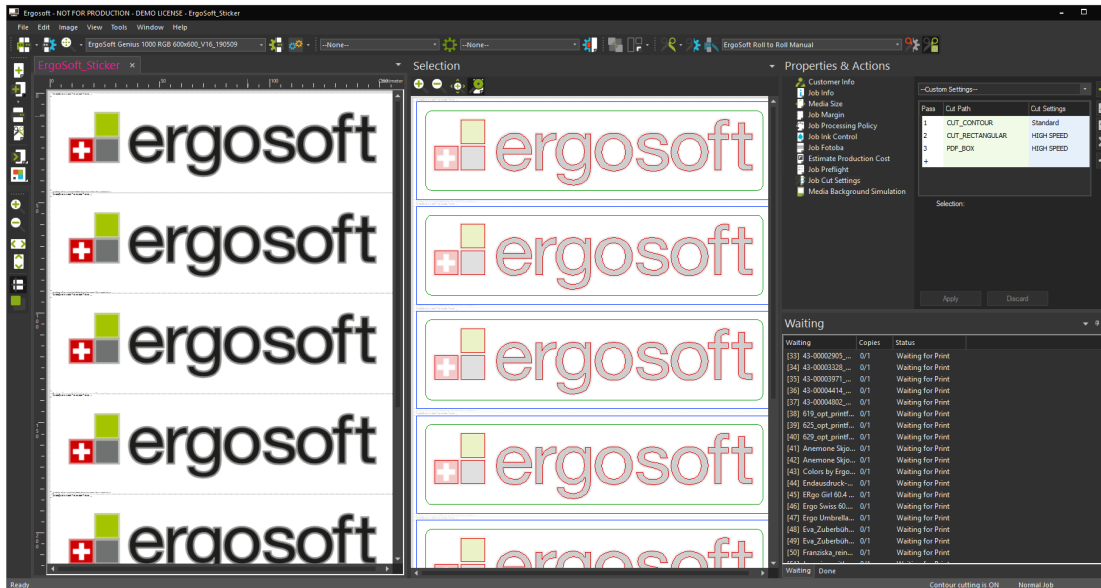
Customer Currency and New Metrics:

A custom currency can be selected, as well as the unit for ink amount calculation can be customized.



Print and Cut Workflows

Details



- Smart Bleed & Cut Lines: Allows the generation of contour bleed and contour (cut) lines, based on the image contour***new**
- The Print and Cut workspace has been reworked and improved
- The Live-Cut-Path preview has been improved
- New cut paths are supported
 - PDF boxes ***new**
 - Adobe Photoshop paths ***new**



Production & Workflow

Details

HotFolder Improvements

Jobs can be automatically released and processed based on Job Length, a Time-driven trigger, or a combination thereof. *new

The management of the temporary data handling has been improved and allows more user control.

Ergosoft Mosaic Desktops Professional in Cooperation with ZEDOnet *new

Together with the company ZEDOnet the Ergosoft Mosaic Desktops Professional driver series has been added. This widens the printer driver range by roundabout 300 new desktop models of major brands. Based on a Contone-interface it allows to run these printers in the native color spaces (CMYK++).





Usability



Usability Summary

ControlCenter

The Ergosoft 16 ControlCenter gives the user access to all main modules of an Ergosoft RIP and allows to manage their settings within one tool. The ControlCenter replaces the 'StartupManager' from previous versions.

Print & Cut Environment Wizard

A new wizard guides the user through the two main scenarios:

- Adding a new Print/Cut Environment including a *new* Queue
- Adding a new Print/Cut Environment based on an *existing* Queue

Online Customer Documentation Portal

The extensive technical documentation, including additional multimedia content, is available online through the Ergosoft Documentation Portal.

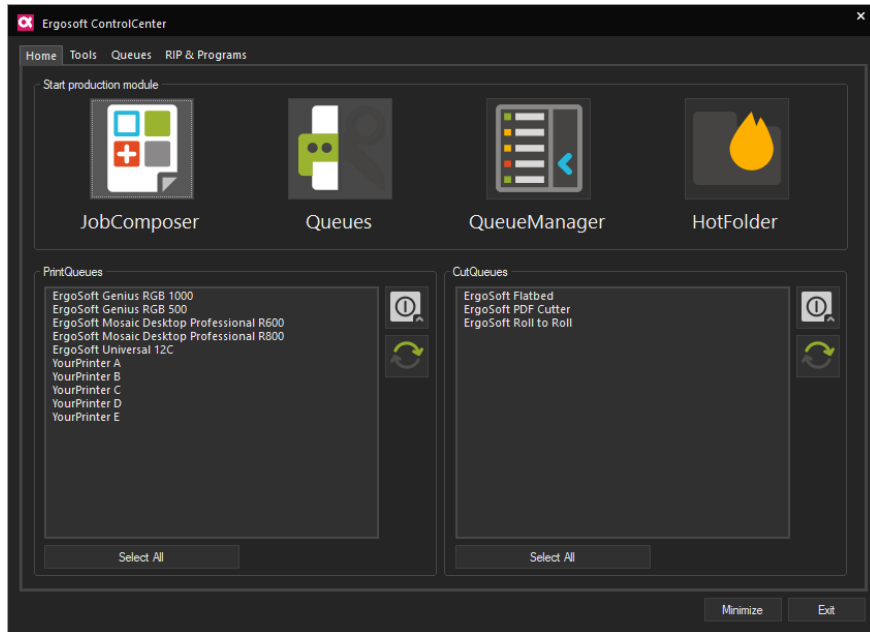
Floating Licensing / Network Dongle

The floating licensing allows the dynamic controlling of available site-licenses through one, centralized physical Ergosoft dongle in a local network.



ControlCenter ^{*NEW}

Details



The new ControlCenter replaces the StartUp Manager.

Feature highlights:

Home tab - Allows the access to all main production modules of an Ergosoft RIP:

- JobComposer
- Print and CutQueues
- QueueManager
- HotFolder

Tools tab - Allows direct access to all important additional tools of an Ergosoft RIP:

- CostManager
- AccessRights
- MaintenanceTool
- Album

Queue tab - Allows the setup and advanced start configuration of all Print and CutQueues.

RIP & Programs tab - Allows the configuration of:

- RipEngines
- Optional features
- Start options of the ControlCenter itself



Environment Setup ^{*NEW}

Details

The image displays four sequential screenshots of the 'Environment Setup' wizard, numbered 1 through 4 in pink circles.

- Screenshot 1: Add New Environment**
This window has a title bar 'Add New Environment'. It contains two main sections: 'Add Queue' with a green plus icon and the text 'Add environment with new queue', and 'Use Queue' with a minus icon and the text 'Add environment for existing queue'. At the bottom are buttons for '< Back', 'Next >', and 'Cancel'.
- Screenshot 2: Select Printer Driver**
This window has a title bar 'Select Printer Driver'. It features a 'Driver:' label, a 'Filter driver list' button, and a tree view showing 'ErgoSoft' as the parent, with 'ErgoSoft Mosaic Desktops Basic' and 'ErgoSoft Mosaic Desktops Professional' as sub-items. At the bottom are buttons for '< Back', 'Next >', and 'Cancel'.
- Screenshot 3: Edit Queue Setup**
This window has a title bar 'Edit Queue Setup'. It includes a 'Port' section with a dropdown menu showing 'C:\Users\ABR\Desktop\Output' and buttons for 'Port Settings...', 'Add Port...', and 'Remove Port...'. Below is a 'Folder for Spool Files' section with a text field showing 'C:\Users\Public\Documents\EaRip\16_32bit\Files\Spool\ErgoSoft Mosaic Desktops Profe' and a 'Browse...' button. Further down is a 'Cost Factor' section with a value of '20' and 'USD per h'. At the bottom is a 'Start mode' section with radio buttons for 'Offline', 'Online' (selected), and 'Manual Start', and a checkbox for 'Start minimized'. At the bottom are buttons for 'Next >' and 'Cancel'.
- Screenshot 4: Name for New Environment**
This window has a title bar 'Name for New Environment'. It contains three text input fields: 'New Environment Name' (with 'ErgoSoft Mosaic Desktops Professional' entered), 'New Queue Name' (with 'ErgoSoft Mosaic Desktops Professional' entered), and 'Queue Description' (with 'My new Mosaic Printer Environment including new PrintQueue' entered). At the bottom are buttons for 'Back', 'Finish', and 'Cancel'.

Wizard for the Generation of Print and Cut Environments and Queues. ^{*new}

A new user-friendly wizard for the generation of Print and Cut Environment, including or excluding the setup of a Print/CutQueue has been implemented.



Usability

Details

Online Documentation Portal *new

The technical documentation has been rewritten and is available on the Online Ergosoft Documentation Portal.

Feature highlights:

- Documentation versioning allows to update technical documentation on the fly
- Multimedia content available

Floating Licensing *new

The floating licensing optionally allows to use one physical dongle, accessible for all Ergosoft RIP stations in a network.

All licenses are centrally managed by one license server.

Miscellaneous *new

Scalable file import and file open dialog including high quality image preview pane has been added.





Color & Color Control



Color & Color Control

Summary

SwatchBook

Ergosoft 16 supports the PANTONE® Color Systems.

New features include:

- Like color deviation / (dE) prediction
- Search closest color by color value
- Print and store blends of similar colors

Color Replacement

In addition to the Named Colors, automatic Spot Color Replacement can now be established through assignments of complete SwatchBooks.

A tolerance value has been added to various color replacement functionalities.

Target Printer Simulation

Easier to find as a new Image Property & Action.

Assigns an output simulation profile to images for color proofing/simulation purposes.

Improved EPS/PDF Preview

A new preview pane within the JobComposer shows a more accurate color preview of the file formats PS/EPS and PDF applying the input – intermediate – output color spaces and rendering intents.

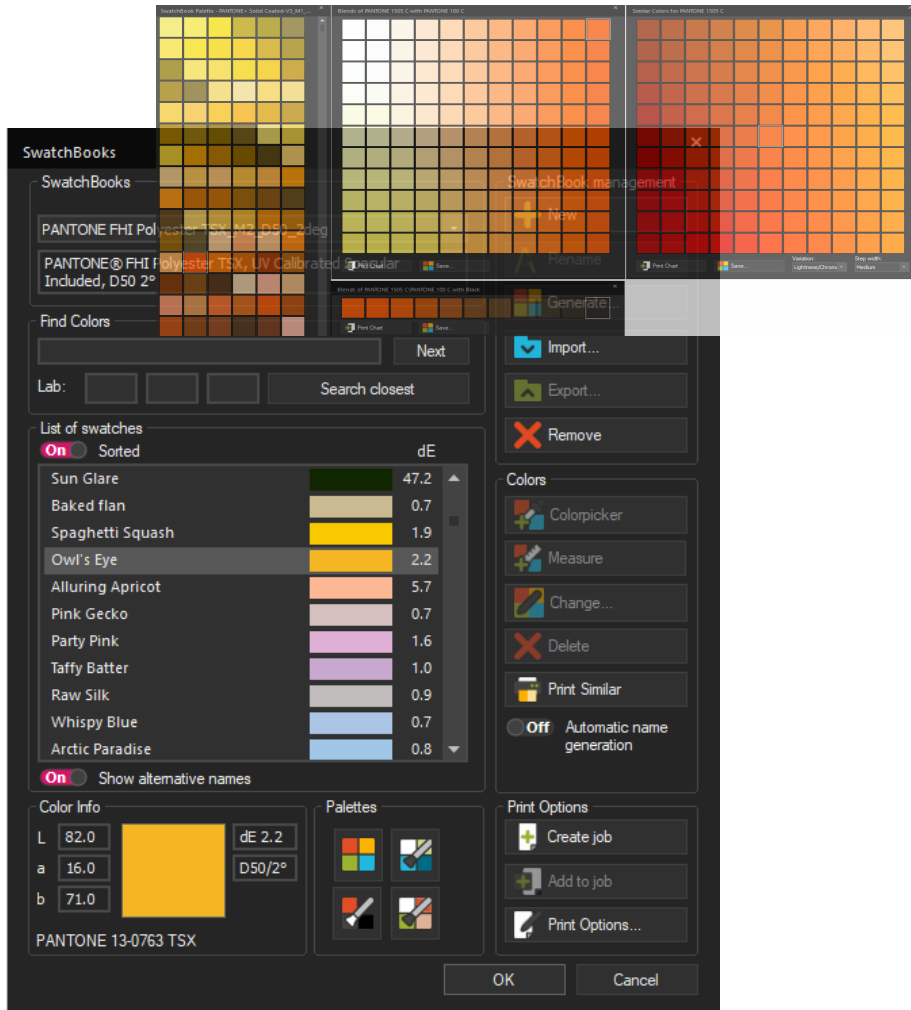
Density Linearization

New industry standards and advanced custom absorption curves are supported. The density linearization wizard has been refined.



SwatchBook

Details

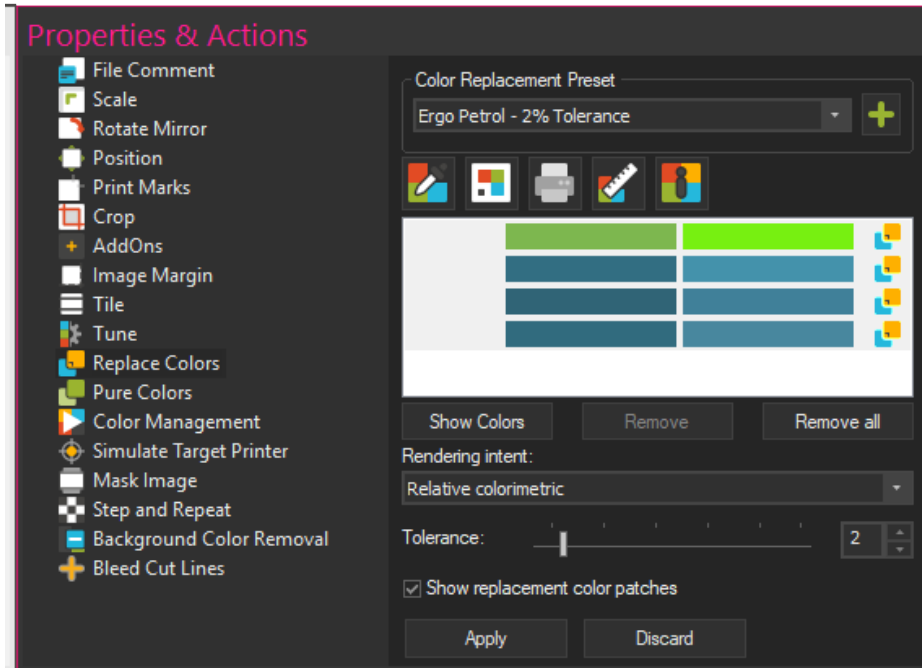


- A new XML-based format allows the storage of more color-relevant information in a color book and also to display them in the SwatchBook feature: **new*
 - Details about light standard
 - SwatchBook description
 - Optional second color swatch name
- PANTONE ® Color Systems INCLUDED **new*
- dE predictions are shown in the color list of SwatchBook **new*
- A new search function by color value (Lab) allows to search for the closest match within the color list of a SwatchBook
- Palettes and Blending tools:
 - Extensively revised
 - Allow to be directly printed through the Palette windows **new*
 - Allow to be stored as a new SwatchBook through the Palette windows **new*
 - A new Palette window has been added, which presents color variation of a swatch selection:
 - Based on Lightness and Hue **new*
 - Or based on Saturation and Hue **new*
 - Color steps can be user-defined **new*



Color Replacement

Details



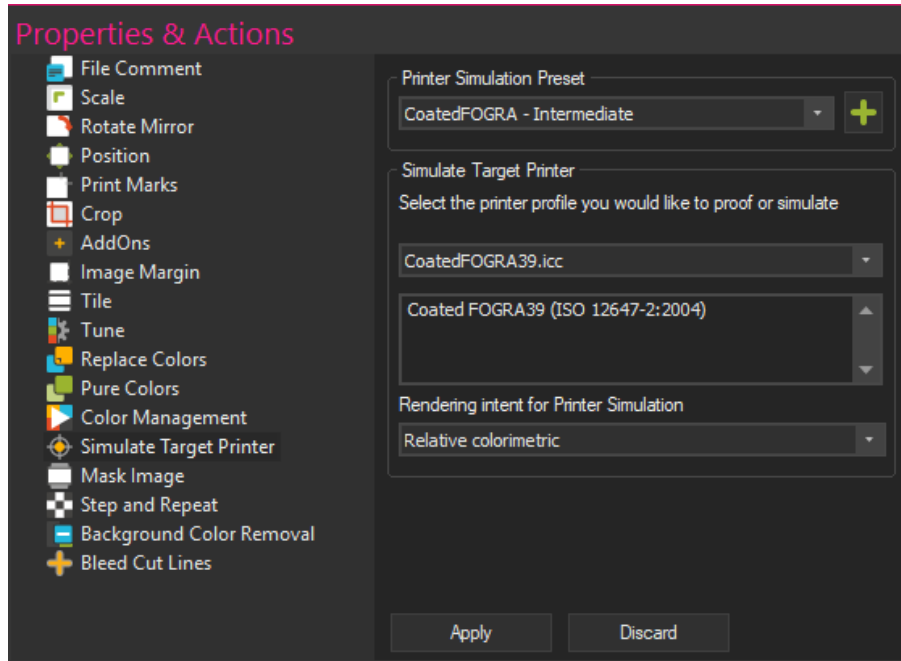
A new function allows the automatic color replacement based on color names (Spot Colors). Complete SwatchBooks can be used in the Image Property, but as well within the ImagePreset. **new*

A tolerance value has been added to all color replacement functionalities based on an input color value including PureColors. **new*



Target Printer Simulation ^{*NEW}

Details



A new centralized Image Property called Simulate Target Printer within the JobComposer allows the user to assign a proofing profile and rendering intent for image placed in the Jobs.



Color & Color Control

Details

Improved Color Preview for EPS and PDF **new*

A newly developed functionality within the JobComposers renders an improved preview of EPS and PDFs, respecting input-, output, intermediate profiles and rendering intents selected. This preview is being displayed in a preview pane of the JobComposer.

Density Linearization – Density Status **new*

The default Density Status E has been updated to the latest norm. Optionally, there are newly also Status T (accepted standard in the United States) and other filters available.





UI Redesigns



UI Redesigns

Summary

Almost all user interfaces within modules, windows and wizards have been refined.

Focus:

- Easy accessibility
- Greater consistency
- Improved usability

Visually direct comparisons between the previous version and Ergosoft 16 illustrate this concept

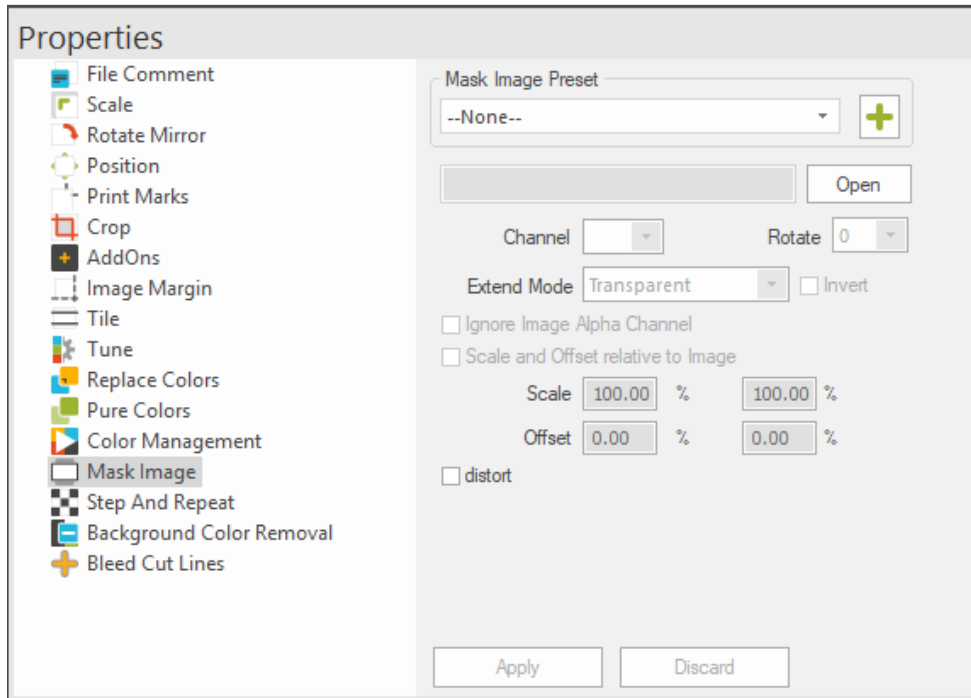
Main dialogs this concerns:

- Job Properties and Actions
- Image Properties and Actions
- Print and Cut Environment management dialog
- New shortcuts have been added to the JobComposer
- Image replacements supported by keyboard arrow keys
- Default Workspaces optimized
- Application Defaults
- ImagePresets

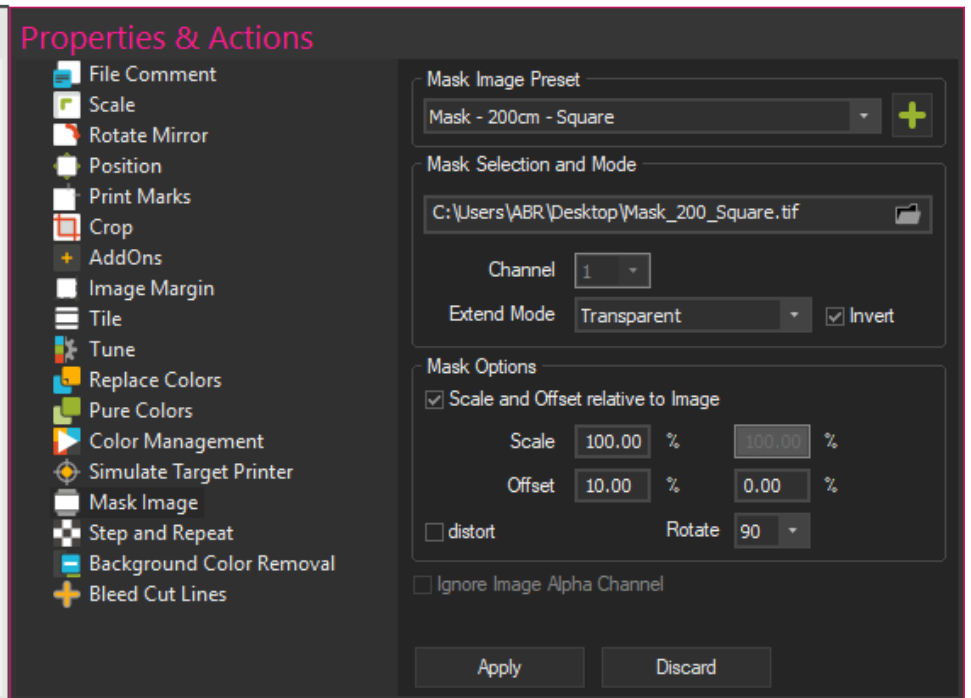


Mask Image

Version 15

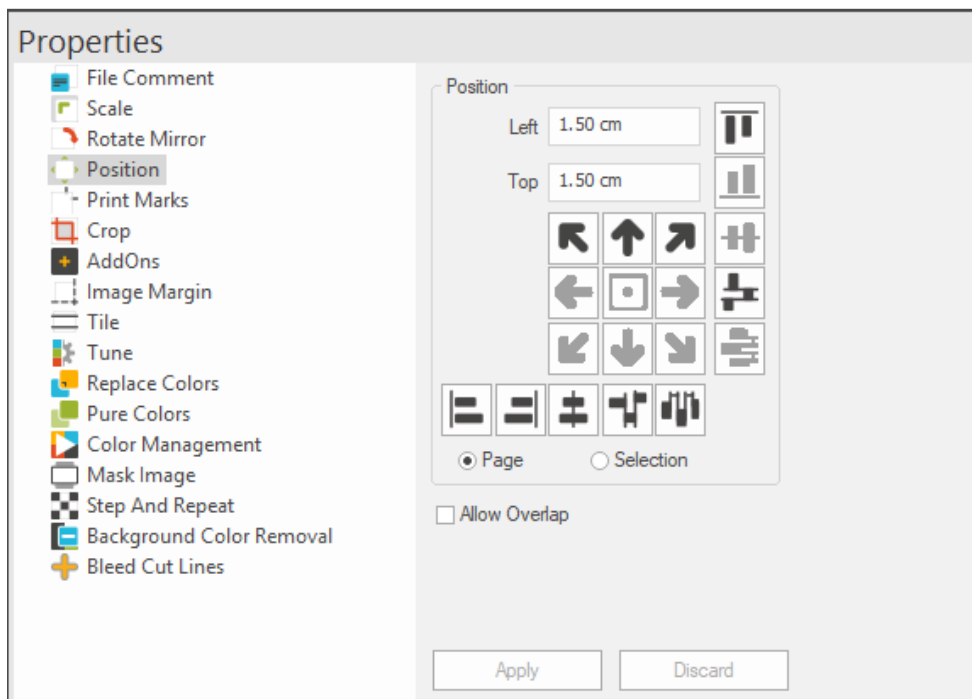


Version 16

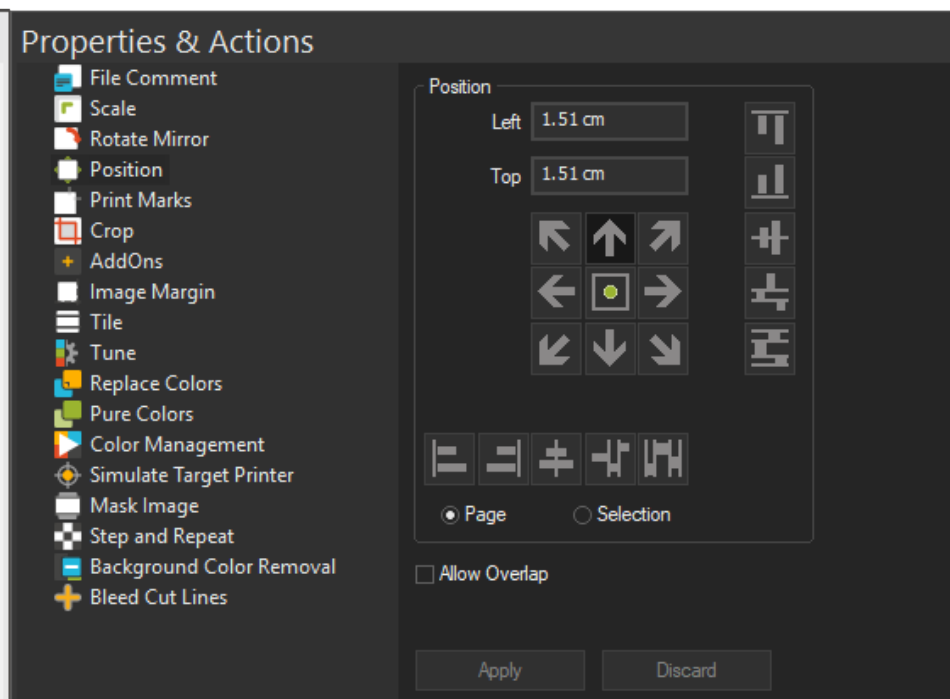


Position

Version 15

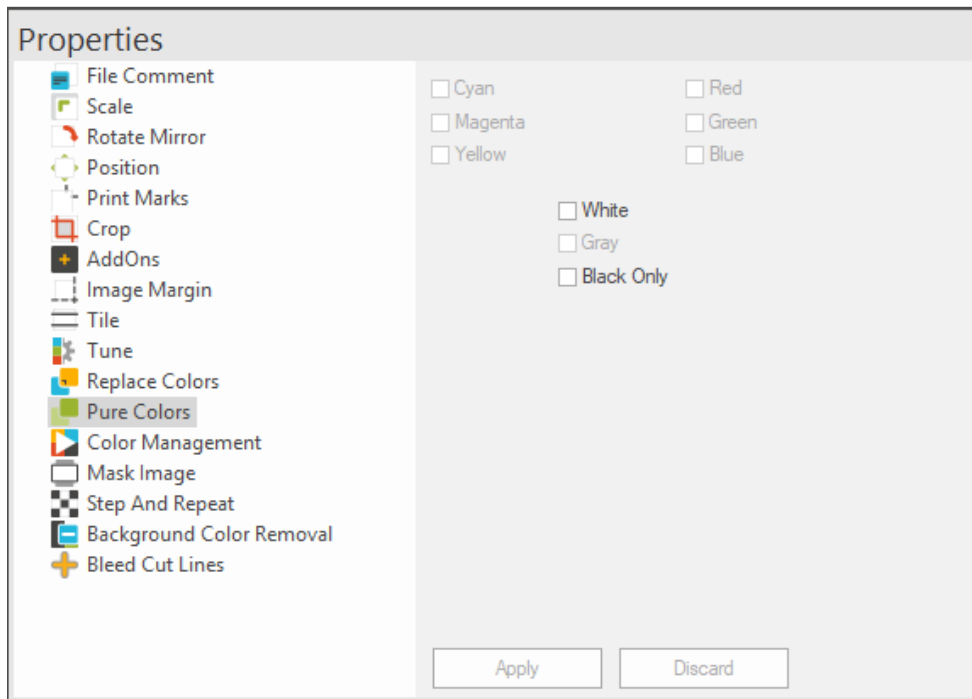


Version 16

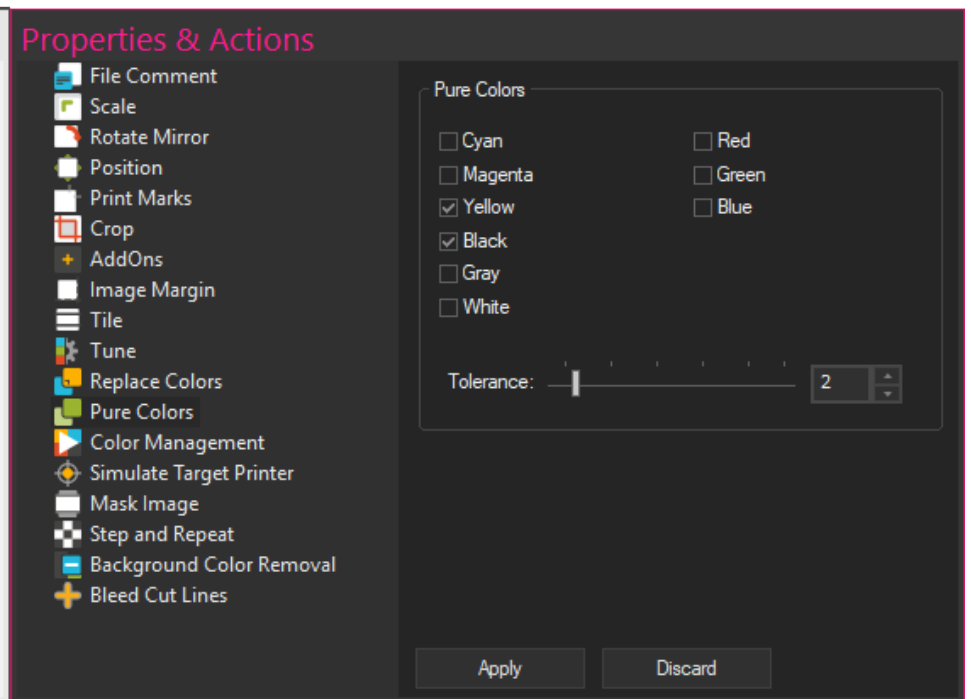


Pure Colors

Version 15

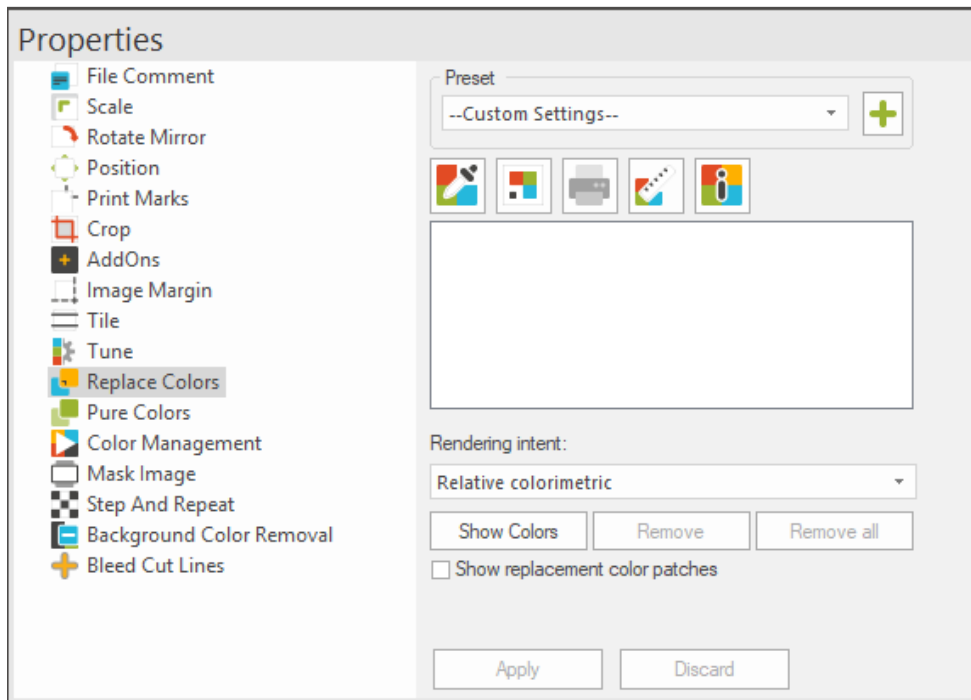


Version 16

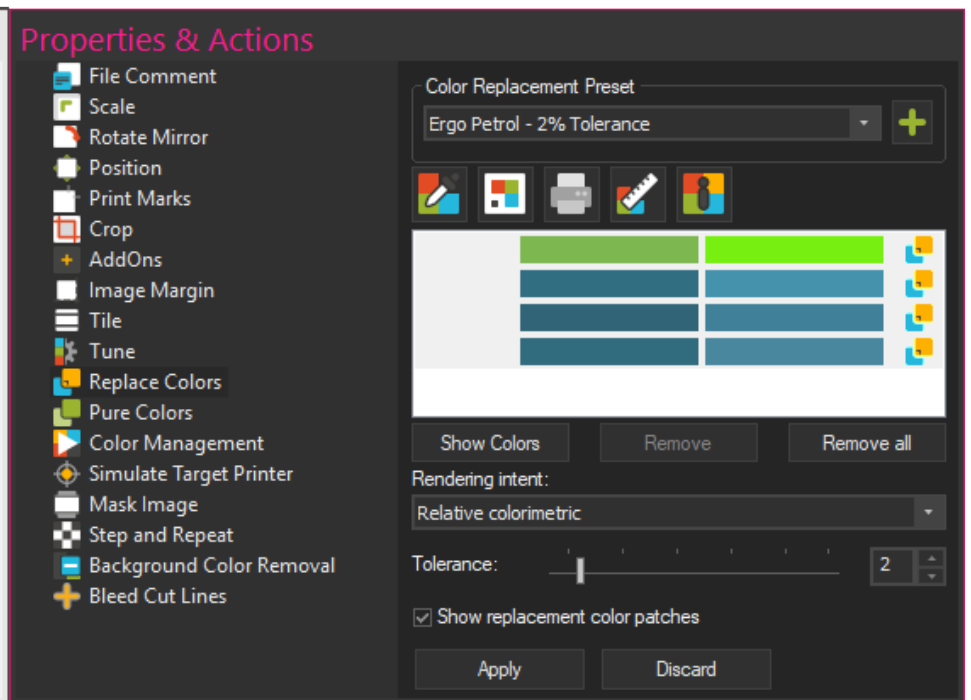


Color Replacement

Version 15

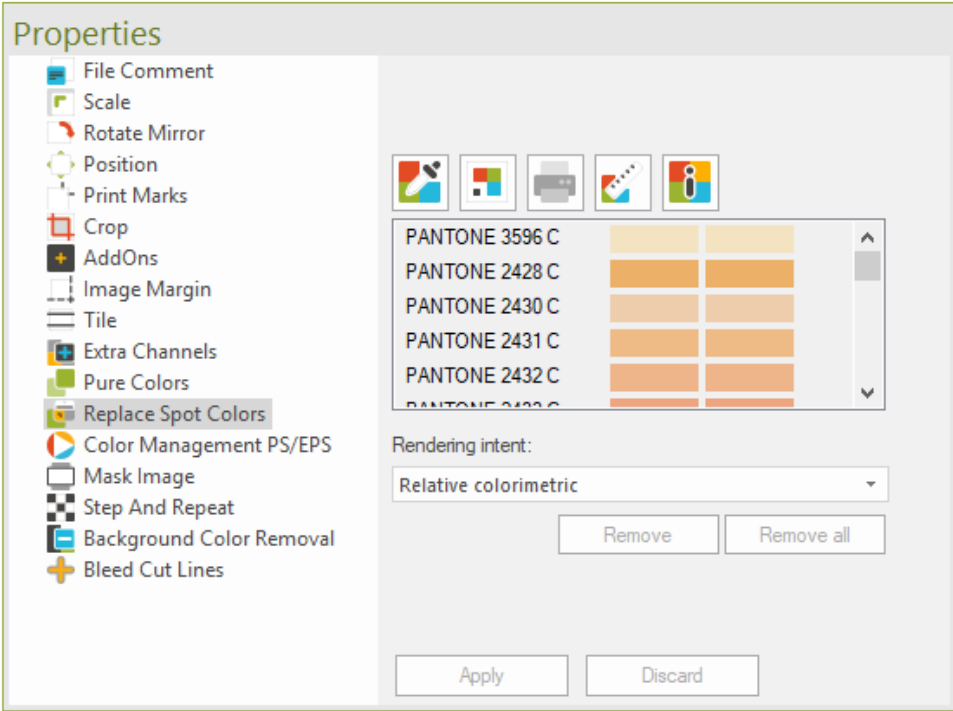


Version 16

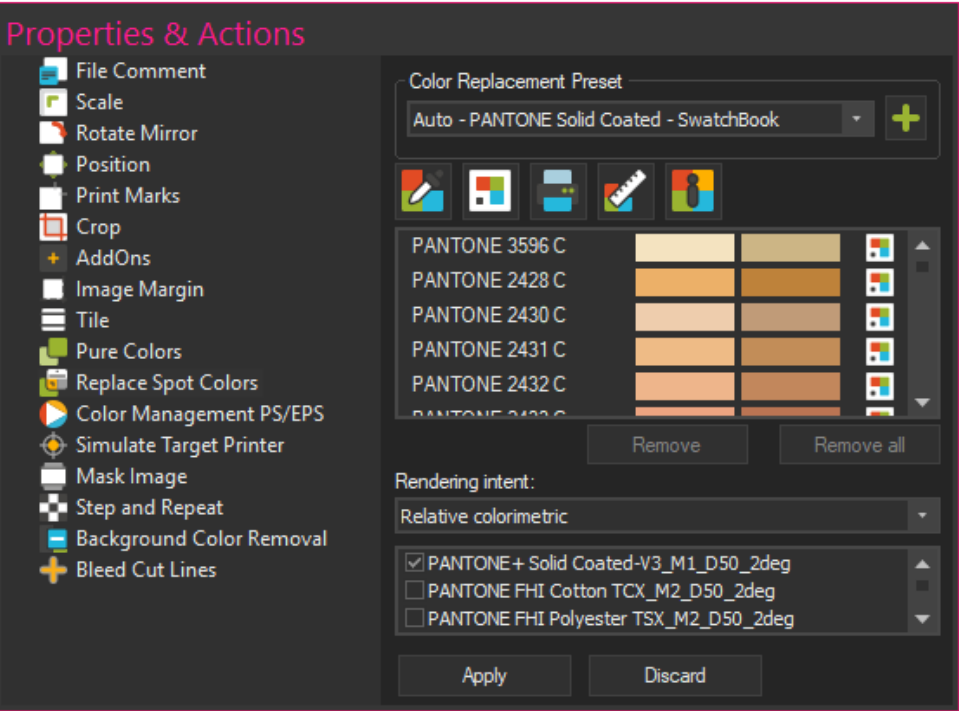


Spot Color Replacement

Version 15

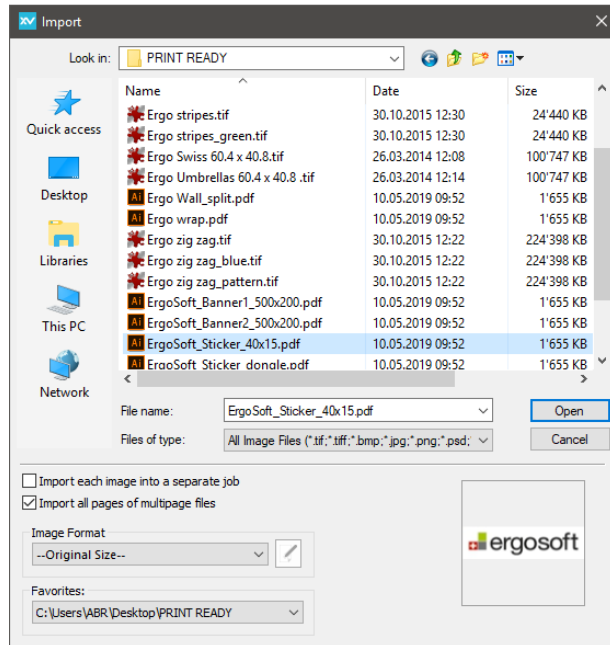


Version 16

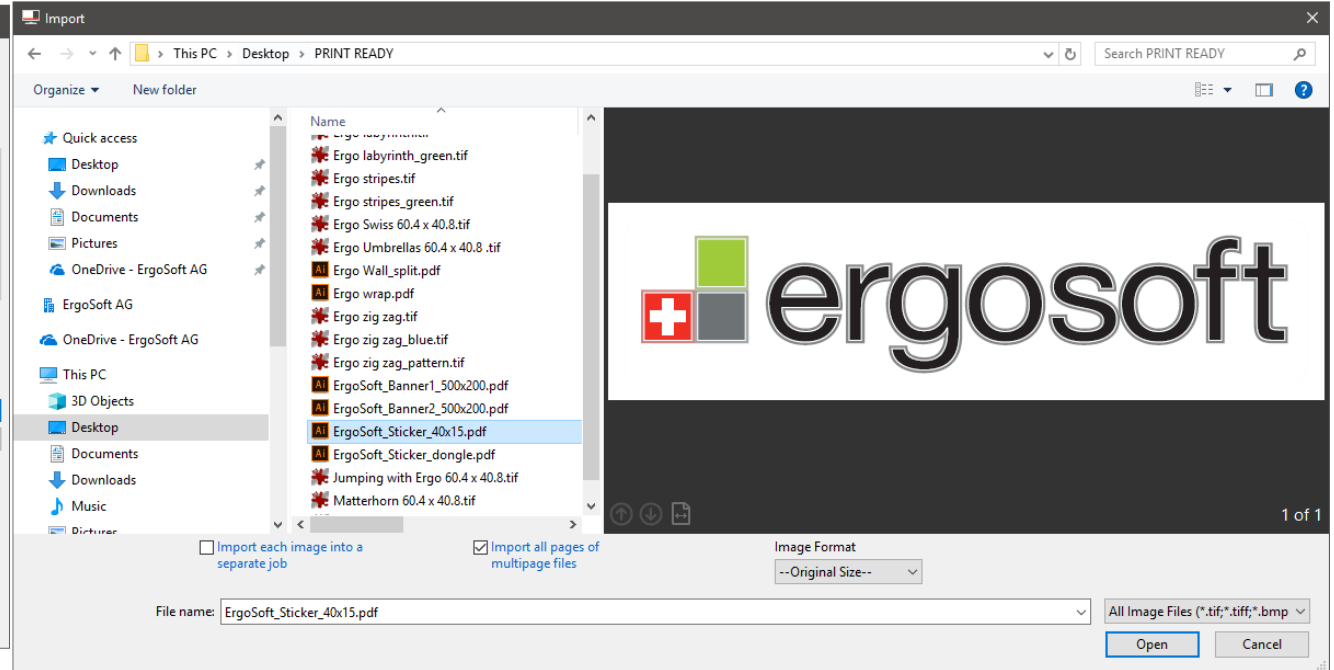


File Import

Version 15 - File Import



Version 16 - File Import





Ergosoft 16

