

Unpacking Guide

2

Model: SA61A



This scanner is designed to be unpacked and moved into the final position without having to call professional movers.

The packaging includes both a lifting system and two ramps that mount to the edge of the pallet so that the scanner can easily and safely roll down the ramps.

Be safe!



WARNING: THIS SCANNER IS VERY HEAVY

Weight

The scanner material is predominantly aluminum for weight reduction. However, the heaviest part, the scan module and middle support assembly, weighs approx. 104 kg.

Never attempt to lift the heavy scanner parts by yourself and always obtain the help of a second person to help you lift the scanner parts from its packaging.

Pallet	15 kg
Ramps	5 kg
Cardboard	10 kg
EPE etc.	7 kg
Basic Scanner	104 kg
Touchscreen	8 kg
Centre Rail, Transmission, Table, Supports & Covers	75 kg

Assistance and safety

Ensure you have adequate room available and suitable assistance on hand to help you unpack and position the scanner safely.

Make sure that you or your helpers do not trip over any packing material while carrying the scanner.



BE CAREFUL: DO NOT TRAP YOUR FINGERS



AVOID BACK STRAIN: ENSURE YOU AND YOUR ASSISTANT ARE CAPABLE OF LIFTING/MOVING SCANNER PARTS WITHOUT RISK OF INJURY

Requirements

Connections

- Grounded power outlet
- Network & Internet connected PC
- Gigabit Ethernet wall socket

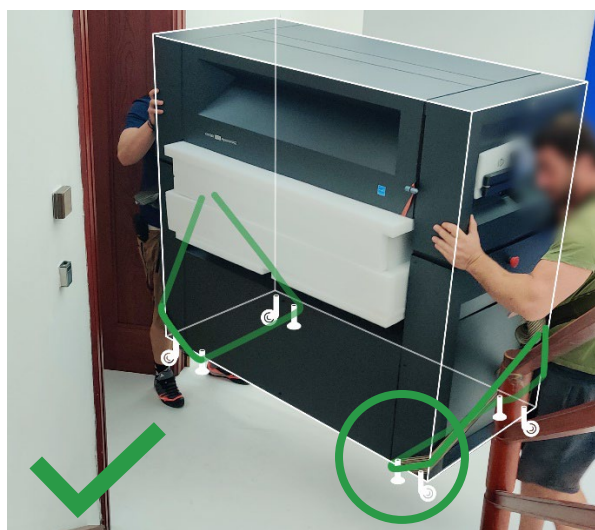
Room and entrance

- Firm, flat surface at least 3500 x 1600 cm (1378 x 630 in)
- Minimum entrance width: 81 cm (32 in), with the foam box removed
- Minimum entrance height: 145 cm (57 in), scan module set in the lowest position

Lifting the scan module

HD Apeiron/42 is designed to be rolled off the pallet and into the installation spot (see Unpacking section). However, if lifting the scan module is required, please adhere to these guidelines:

- Use professional movers, if lifting is needed
 - Place lifting straps behind the support feet only, not the sides (see images)
 - Avoid tilting the scan module



Documentation

All information and documentation are stored behind this lid in the cardboard packaging:

1. Getting Started
2. Unpacking Guide
3. Assembly Guide
4. User guide, incl. software installation

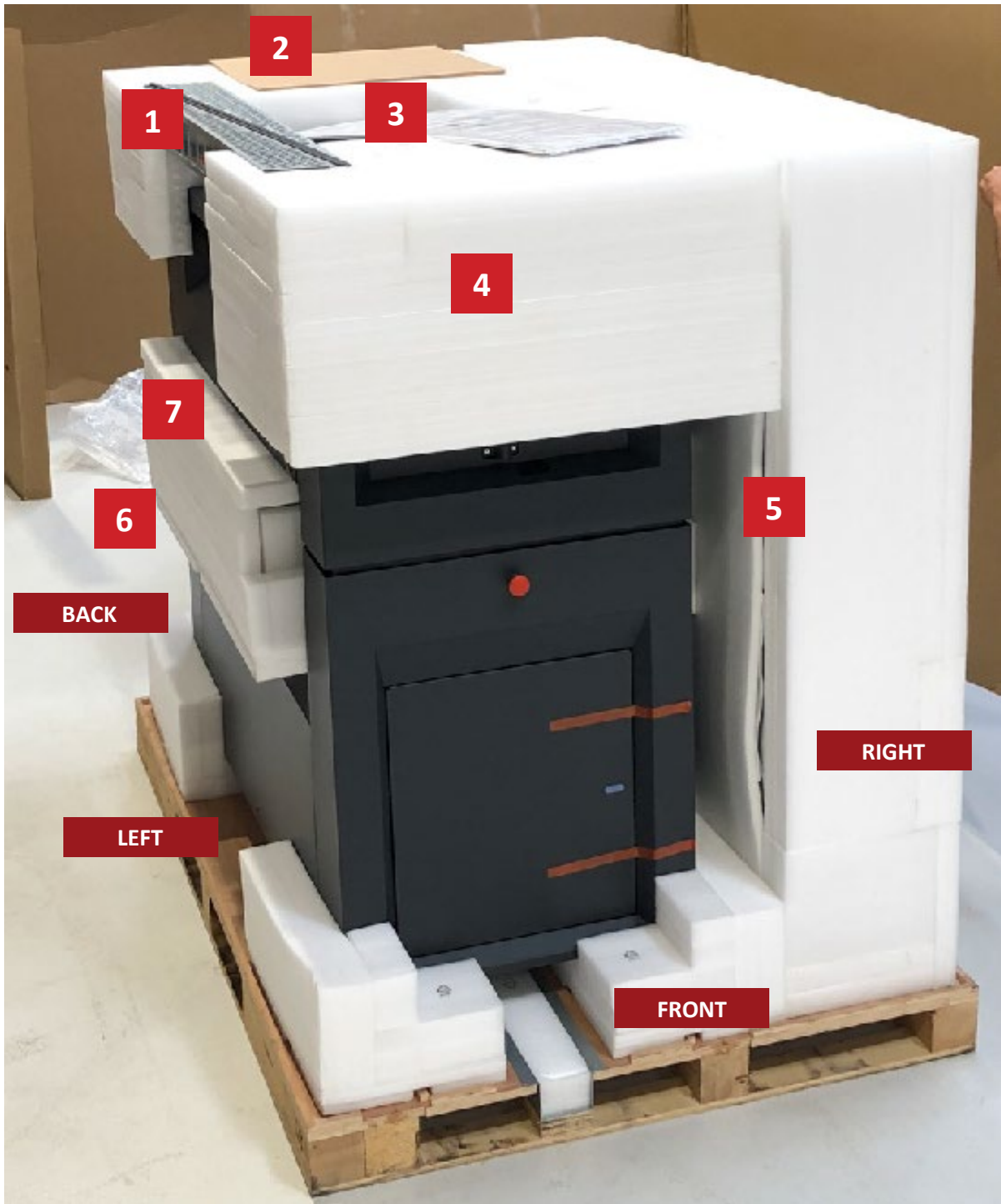


Unpacking

Outer material

Remove the outer plastic wrap, protective cardboard and packing strips.

- Be sure to retain the packing material if you intend to move the scanner to another site
- Do not leave empty packaging where it can block a right of way or a fire exit
- Always dispose of the packing material responsibly if it is no longer required
- Remove the accessories kit and any documentation from the packing before discarding



Pallet content

Remove items in the following order, and place them away from the pallet in a temporary location:

1. Top, right hand side: Two metal ramps (unwrapped)
2. Top, back: Touchscreen (cardboard box)
3. Top, middle: Foam box with lift system
4. Top, front: Foam, incl. a cardboard box with screw bags, cables and other small parts
5. Right hand side, TWO PEOPLE: Tilt the large foam box 90 degrees to the side and lay it flat on the ground



6. Back: Locate the power cable, plug the scanner into power and switch the button ON. This automatically raises the scan module 5 cm (2 inches)
7. Left hand side, TWO PEOPLE: Pulling it away from the scanner at a straight angle, remove the foam box from inside the scanner



Lift and ramps

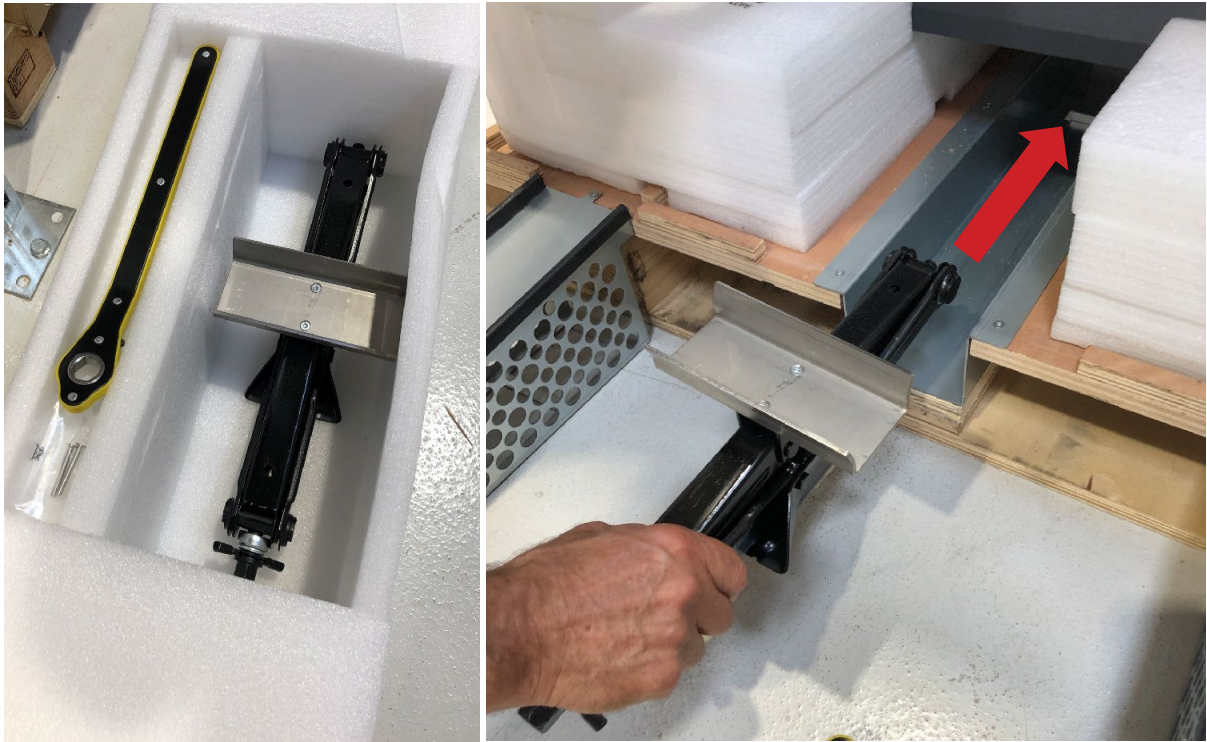
At the front of the pallet, place the two ramps and attach them in the pre-drilled holes with metal pins (found in a bag attached to one of the ramps).



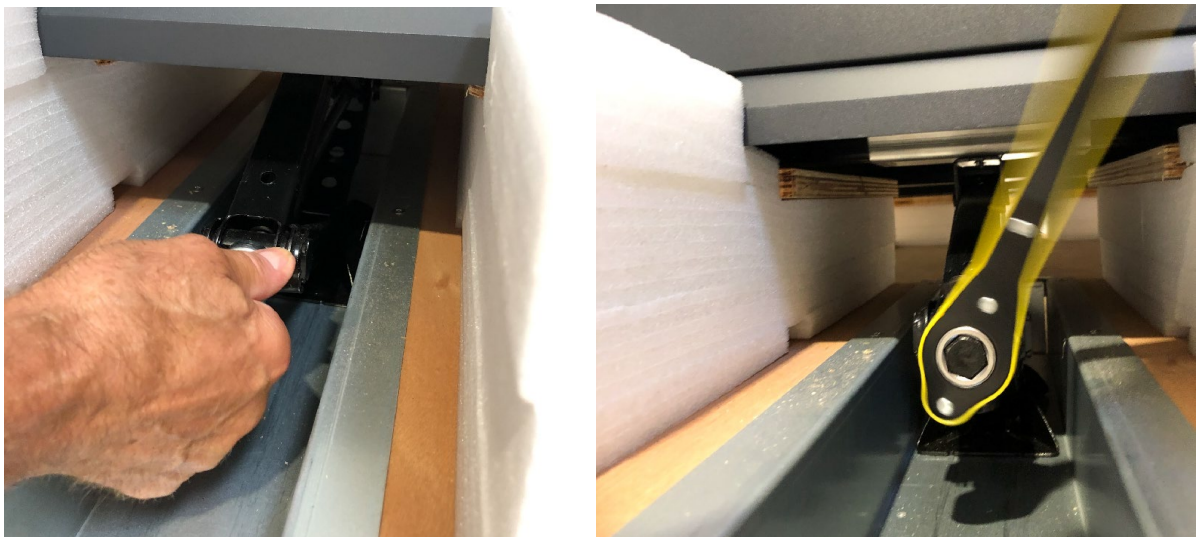
Remove foam to leave room for the lift.



Locate and insert the lift until it touches the metal stop in the pallet.



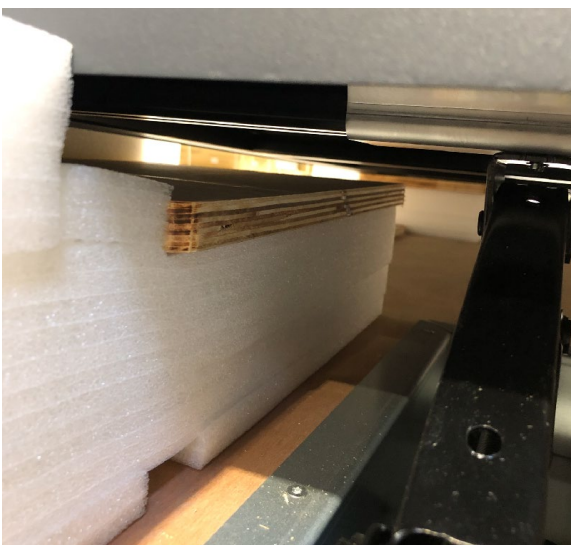
Turn lift knob clockwise by hand at the beginning, and shift to using the handle when the lift reaches the bottom of the scanner.



Ensure correct placement of the lift when it is high enough to touch the bottom of the scanner.



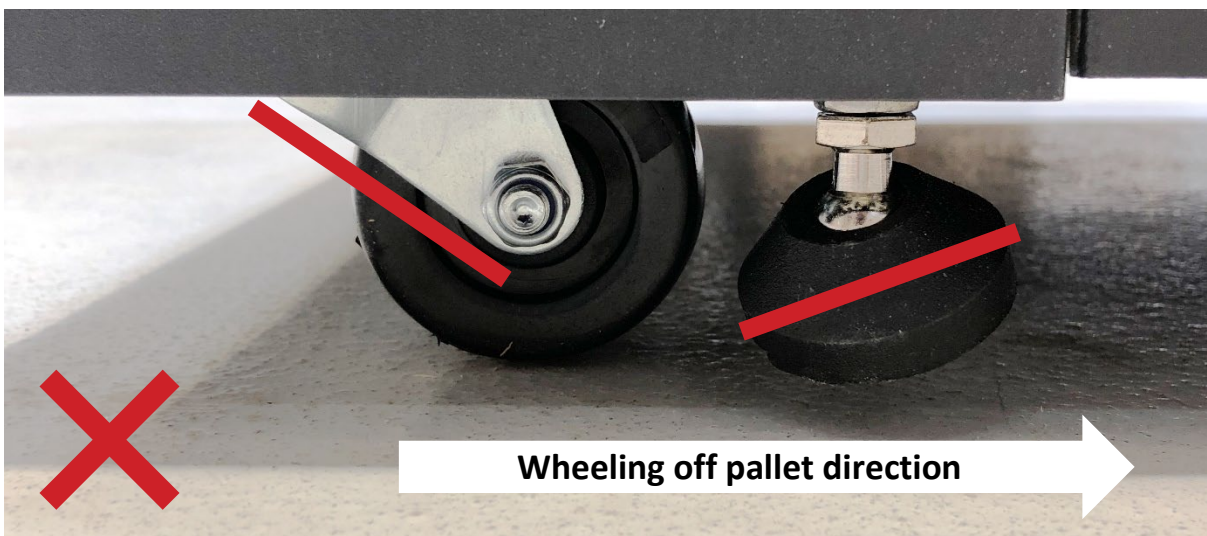
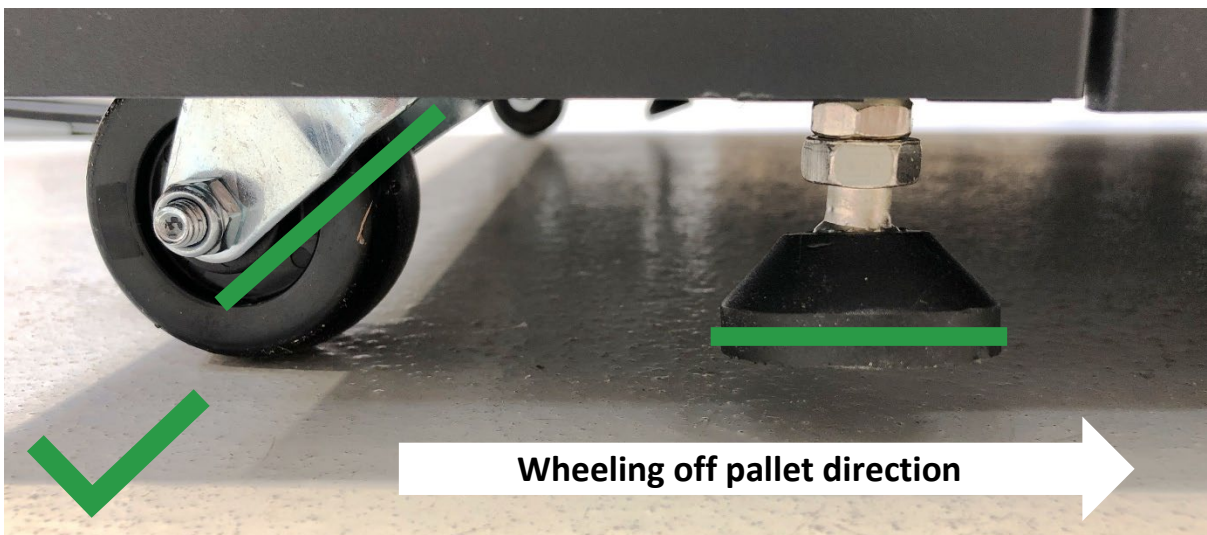
Stop raising with the lift when the blocks of foam and plywood at the scanner edges can be removed without any force. Remove the foam/plywood blocks.



Shift to reverse on the lift handle.

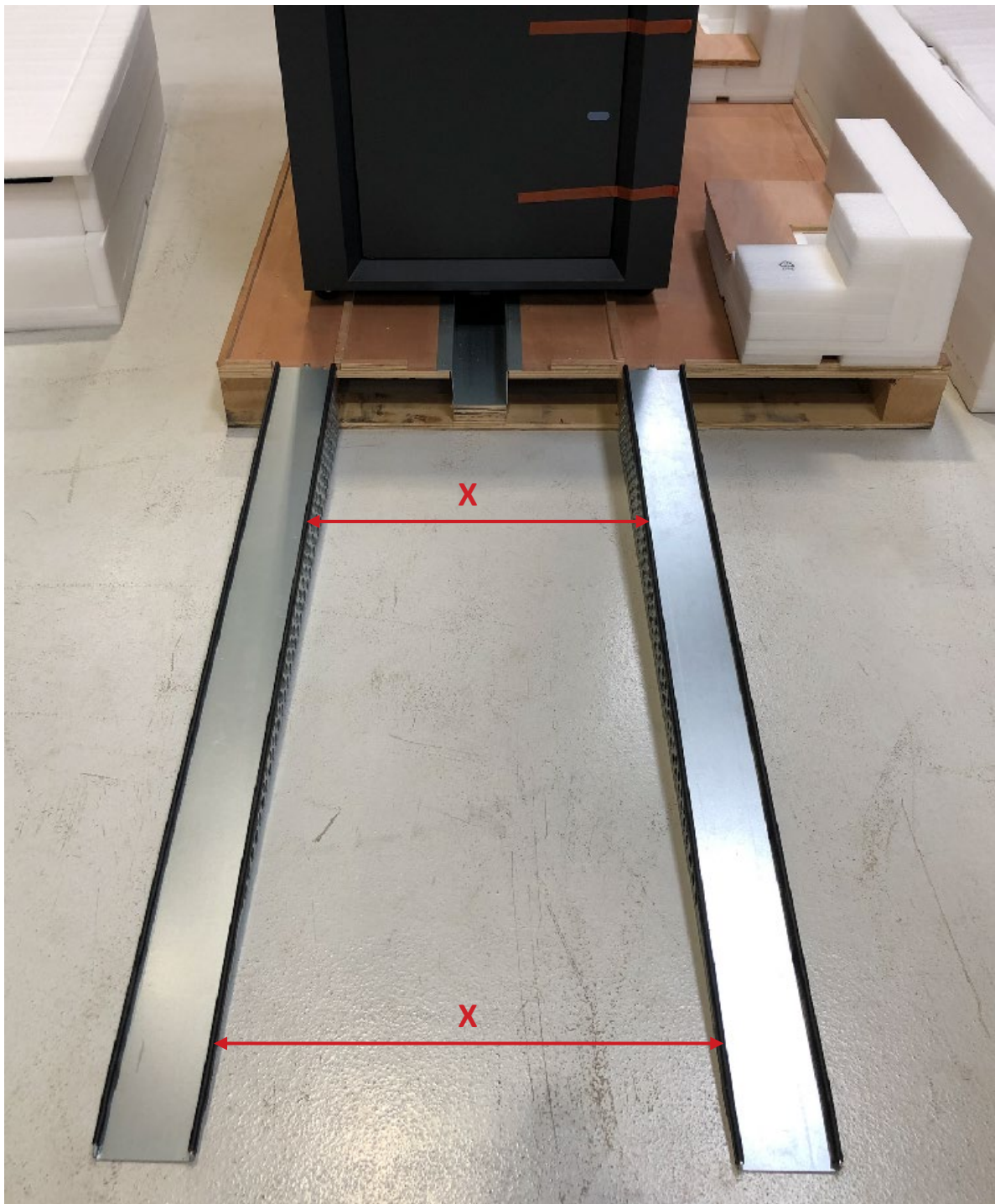


Lower the scanner, but ensure that the castors point backwards, and that the feet are levelled and in the upmost position. This will ease the wheeling off of the pallet.



Do the same lifting and removal of foam/plywood for both the front and the back ends of the scanner.

Firm, flat surface: Make sure that the ramps are placed with the same distance at both ends, and that they are still securely attached to the pallet.



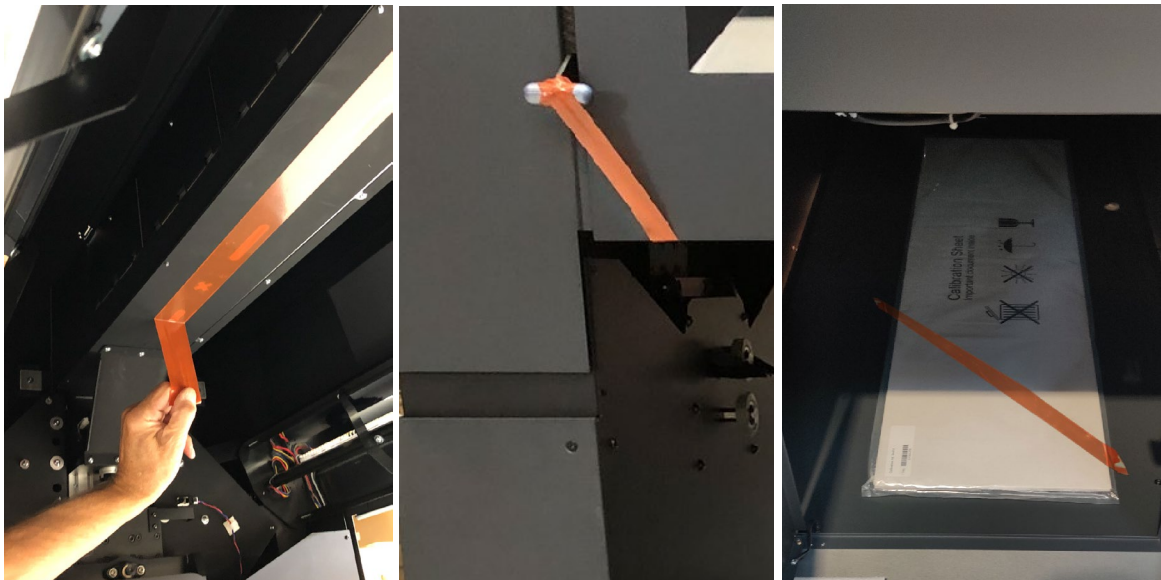
TWO PEOPLE:

Roll the scanner slowly off the ramp. Push and hold at the middle support assembly (the bottom part).





Remove the protective tape.



Please continue the installation with the Assembly Guide

3