



DigitalFactory

# HIGH FIDELITY COLOR. OPTIMIZED WORKFLOW.

Digital Factory RIP software provides an all-inclusive color management, production workflow solution across a variety of applications supporting virtually all widely used digital printing as well as cutting devices. A completely integrated print as well as print and cut software package, Digital Factory powers all digital print production projects from start to finish.



# DIGITAL FACTORY FEATURES A CENTRAL HUB FOR SIMPLIFIED WORKFLOW MANAGEMENT

## VISUAL PRODUCTION MANAGER (VPM)

VPM includes all of the most widely used pre-production, job management tools you need in single easy to use location.

**Easy Access Multiple Queue Tabs with simultaneous multiple printer support**

**Easy access pre-production tools**

**Job scheduling with detailed file information**

**Job archive**

**Optimized job nesting**

**Interactive large print tiling**

**Contour cutting of complex shapes**

**Step and repeat**

Visual print preview

## DIGITAL FACTORY IS AVAILABLE IN THREE PACKAGES.



### Digital Factory Print and Cut Production

Multiple printer/cutter support for higher volume shops.



### Digital Factory Print and Cut

Single printer/single cutter support for shops using print and cut workflows.



### Digital Factory Print

Single printer support for shops wishing to optimize digital print workflows.

\*Specialty modules can also be added to packages as required. Visit [www.cadlink.com/product/digitalfactory11/](http://www.cadlink.com/product/digitalfactory11/) for details.

# MAXIMIZE PRINTER PERFORMANCE. STREAMLINE AND AUTOMATE PRODUCTION WORKFLOW.

## SIMPLIFIED FILE PROCESSING



Import virtually any file types (including .pdf)

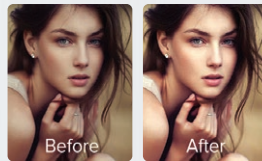


Print direct from design application(s)



Cloud-based as well as network printing

## IN-RIP TOOLS FOR PRE-PRODUCTION



Improve file quality

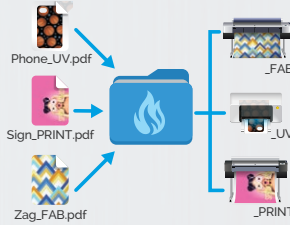


Apply special effects

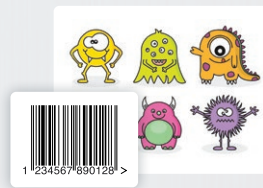


Production mark-up tools

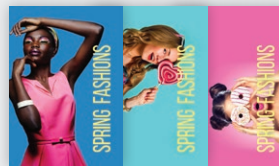
## AUTOMATION, JOB MANAGEMENT AND SCHEDULING



Automatic job sorting



Barcode job processing



Custom templates for automated print layout

## MULTIPLE APPLICATION SUPPORT



Precise, vibrant color printing on all media types



Print and cut production with fully integrated contour cutting



Specialty print applications (UV, textile and much more)

## BENEFITS OF USING DIGITAL FACTORY



### Unmatched color quality.

State-of-the-art color management engine ensures precise, vibrant color printing.



### Cost Savings.

Enhanced automation tools provide instantly measurable labor and consumable savings.



### Unlimited

### workflow options.

Support virtually all digital print applications.



### Standardize

### shop software.

Run all printers and cutters with a single software solution

# DIGITAL FACTORY FEATURES\*

## PERFORMANCE AND COMPATIBILITY FEATURES

- Windows® 11, 10 (32/64 bit) support
- Automated network printing
- Automated Cloud-based printing (may require additional module purchase)
- Optimized RIP processing speeds
- Start to finish .pdf workflow support
- Send jobs directly to queues from design applications (PhotoShop™, Corel™, Illustrator™)
- Rip once, print many
- Rip and print on the fly
- Multiple printers, cutters and queues supported simultaneously
- 100+ printer drivers included
- 150+ cutter drivers included
- Lightning fast 64-bit architecture
- Optimized multiple job processing (RIP threading)
- Simplified navigation; Easy queue menu tabs, page view and job properties
- Grid option in job preview window
- Instant access to job information using "mouse-over image"
- Automated TCP/IP port search for easier network printing setup
- Quick job reprints with save job backup (.jpb file) option
- Worldwide language support (Unicode International Standard)

## COLOR MANAGEMENT TOOLS

- High fidelity, ICC compliant color management engine
- 4,000+ custom color profiles included (most ink/media sets supported)
- Simple ink volume controls
- Complete manual color curve controls by image detail (shadows, mid-tones, highlights)

- Advanced color correction tools interface
- Custom halftone settings
- Separation curve adjustments
- Match Pantone colors with Pantone color matching tables
- Easy color adjustments
- Color adjustment wizard for merging ICC rendering intents
- Easy-access to printmodes and printmode overrides (less queue creation and management required)

## OPTIMIZED JOB MANAGEMENT, SCHEDULING AND AUTOMATION TOOLS

- Unique, single window visual interface, one central easy to manage hub for all jobs
- Easy to use queue set-up wizard
- Auto-scheduling/manual scheduling of jobs
- On-the-fly job prioritization using simple drag and drop
- Job archiving, history, print status and job log Job notes
- Detailed Job costing
- Hot folder support
- Extended bar code support for automated production
- Export template layouts with improved template user interface
- Automatic Job Sorter (module purchase required)
- Production Spooler (module purchase required)

## BUILT IN PRE-PRODUCTION TOOLS

- Visual print/print and cut preview
- Raw print data preview
- Tiling of large jobs (automatic or manual controls)
- Nesting (automatic or manual controls)

- Multi-copy with spacing controls
- In-RIP crop, rotate, mirror, scale job tools
- Soft proofing
- Step and repeat tool for automated repeatable pattern creation
- Built-in special effects/filters (distressed, distressed frames, sharpen)
- Updated Supersize filter functionality for improved image resolution
- Job color replacement
- Apply chokes/spreads to any color plane
- "KnockMeBlackOut", black and grey color removal
- "KnockMeColorOut", white and other color removal

## UNMATCHED PRINT & CUT FEATURES

- Fully integrated print and cut support without the use of plug-ins or third-party cutting software
- Automated contour cutting using PostScript cut line support
- Full cut sorting supported
- Instant decal maker using HalfCut feature
- Complete interactive print and cut nesting preview
- Send print and cut jobs directly from design applications into queue
- Print and cut jobs on hybrid or separate output devices
- "Roll to roll" print and cut. No need to rewind media for post-print cutting
- Easy registration marks. Machine-specific or generic registration support
- Manual alignment cutter and optical eye cutter support

\*not all features reside in all packages (visit website for detailed feature by package list)

## FIERY FAMILY OF SOFTWARE PRODUCTS

Discover the benefits of using a single source for all your design and production requirements



[www.cadlink.com](http://www.cadlink.com)

Digital Factory is a registered trademark of Fiery, LLC. All other trademarks are a property of their respective owners.

### SUPPORTED PRINTERS:

Visit [cadlink.com/supportedoutputs/](http://cadlink.com/supportedoutputs/) for a list of all supported printers.

### CONNECT WITH US:



### COMPATIBLE WITH:



### SYSTEM REQUIREMENTS:

	MINIMUM	RECOMMENDED
CPU	Dual Core (2.0 Ghz or higher)	Triple Core (2.0 Ghz or higher)
HDD	500 GB	750+ GB
RAM	2 GB	4GB