



ECO SOLVENT

Media Application Guide

Majestic Aqueous Gloss Media

Monarch Aqueous Matte Media

Motif Specialty Aqueous Media

Magnate Eco Solvent, Latex & UV Media

Marquis Digital Media

Millennium Laminates





ECO SOLVENT



Most of our Eco-Solvent medias are cross platform with Latex and Ultraviolet ink systems. For that added protection, be sure to consider Que Media's line of laminates. Whether it's long term indoor or short term outdoor, you'll find the right media to get the job done with exceptional results!



- **Choosing the Right POS/POP Media**
- **Ideas that Stick - Self Adhesives**
- **Canvas, Textiles and Photo Papers for That Perfect Look and Feel**
- **Choosing the Right Banner Offers Long Term Solutions**
- **Over Laminates for Protection and Finish**



Many of Que's products are cross-platform compatible. Take a look at the ink icons to the right. These icons will appear throughout this guide to all media that applies.

Identifying Media Ink Sets:



AQUEOUS



ECO SOLVENT



LATEX



ULTRAVIOLET



Point of Sale, retractable stands, pop-up and tradeshow display.

Choosing the Right POS/POP Media

Choosing the right media for POS/POP application can be a complex task in balancing durability and cost. Que media has the perfect solution for your solvent ink systems.

BEST FOR DURABLE ROLL-UP BLOCKOUT DISPLAYS

DURALUX

Textured satin film with grey blockout backside



This 100% polypropylene film has a rich, anti-glare texture that works perfectly in banner stand applications. Its dark grey back provides extra opacity, keeping your images bright with no wash out from light penetrating the print. A great cost effective option over PET or PVC film.

- Roll Up Banners
- Indoor/Outdoor Signage
- Poster POP
- Movie Posters & Product Spotlights

BEST FOR 2-SIDED PRINTING & DISPLAY

HDPPLS

Everyday Matte Polypropylene Banner Double-side Printable



High quality and low cost makes this media your #1 choice for general poster/banner advertising. Matte water resistant finish, apply laminate for a complete, tear free finished product.

- Low Cost Roll-Up Displays
- Banner Stands
- POP-IN Displays
- Sign Stands
- "Push-Pull" Window Graphics
- Trade Show Displays
- Hanging Signs

BEST FOR ROLL-UP BANNERS & DISPLAYS

SBOB

Hybrid matte blockout film



SBOB is now equipped with a smooth print surface, making it a great choice to pair with one of our Millennium PVC Laminates. SBOB has a multi-layered composition, combining different formulations of film to provide optimal "lay flat" banner presentation for just about any type of display. 100% blockout and capable of high print resolution, alongside great indoor/outdoor durability. SBOB has become one of our premier blockout films on our product line.

- Trade Show Displays
- Banner Stands
- POP Displays
- Hanging Banners

BEST FOR RIGID POP-IN/POP-OUT DISPLAYS

SPOP

Hybrid satin anti-scratch semi-rigid blockout grey back film



With it's perfect blend of rigidity and flexibility for easy handling, this Pop film can be laminated for increased protection but is not necessary. Strong enough for multiple display insertions without breaking, tearing or chipping. 100% block-out.

- Display Units
- Trade Show Booths
- High-End POS
- Pop-In Display

BEST FOR 2-SIDED BLOCKOUT DISPLAY

SWRPPBO2S

2-sided blockout matte polypropylene



Double-sided bright white matte top coated with blockout to produce colorful 2-sided printing. The perfect solution for trade show displays, posters, double sided window graphics, and snap-in sign stands requiring two-way traffic.

- Low Cost Roll-Up Displays
- Banner Stands
- POP-IN Displays
- Sign Stands
- "Push-Pull" Window Graphics
- Trade Show Displays
- Hanging Signs

BEST FOR SHORT-TERM BLOCKOUT ROLL-UP BANNERS

SWRPPBO

Hybrid matte stay-flat polypropylene



Bright white satin top coating for bright color graphic printing. The back side coating creates an economical product with good stay-flat qualities. The perfect solution to short-term trade show displays and posters.

- Low Cost Roll-Up Displays
- POP-IN Displays
- Trade Show Displays
- Hanging Signs

Compare:

STRONG Polypropylene (PP)

Gives a good balance between cost and durability. Tear resistant and will not shrink over time.

STRONGER Polyester (PET)

Dimensionally stable, excellent tear resistance, and will not shrink. Completely lay-flat.

BEST FOR ROLL-UP BANNERS & UNIQUE DISPLAYS

CMPET

Satin Chrome Roll-Up Film



Add a new look to your advertising with this unique chrome finish roll-up film. Compatible with Eco Solvent, Latex, and UV printing platforms. Developed to be a unique retractable banner stand/display film option and give your graphics an edge over the widely used, white films. An easy-to-use alternative compared to dye-sublimation on aluminium, while achieving the same effect without the need for a dye-sub printer. PVC-Free and curl resistant!

- Roll-up Banner Stands
- Trade Show Display
- HDR Photography
- Retail Display

Choosing the Right POS/POP Media

**More
Roll-up
and
Pop-in
Solutions**



BEST FOR INDOOR/OUTDOOR BACKLIT DISPLAYS

SBLFM

Satin backlit polyester film



Our coated PET film has a low-glare satin top coating that dries quickly and produces dense blacks and vivid colors that will pop with a light box. It is appropriate for outdoor display and is scratch resistant. Laminate for further protection with one of our Millennium laminates.

- Kiosks
- Indoor/Outdoor Backlit Display
- Transit Display
- Trade Show Display

BEST FOR TWO-SIDED BLOCKOUT DISPLAY

QM-SWRPPBO2S

2-sided blockout matte polypropylene



Double-sided bright white matte top coated with blockout to produce colorful 2-sided printing. The perfect solution for trade show displays, posters, double sided window graphics, and snap-in sign stands requiring two-way traffic.

- Low Cost Roll-Up Displays
- Banner Stands
- POP-IN Displays
- Sign Stands
- "Push-Pull" Window Graphics
- Trade Show Displays
- Hanging Signs

BEST FOR RIGID POP-IN/POP-OUT DISPLAYS

SPOP

Hybrid satin anti-scratch semi-rigid blockout grey back film



With its perfect blend of rigidity and flexibility for easy handling, this Pop film can be laminated for increased protection but is not necessary. Strong enough for multiple display insertions without breaking, tearing or chipping. 100% block-out.

- Trade Show Booths
- High-End POS
- Pop-In Display

BEST FOR ROLL UP DISPLAYS

SB300B

Heavyweight satin eco-solvent coated silver back blockout roll-up textile



Made from 100% polyester woven fabric. It has a complete block-out silver back and a bright white matte coating for high color density two-sided printing. SB300B has excellent lay-flat properties making it a perfect solution for roll-up banners requiring blockout.

- Banner Stands
- Trade Show Booths
- High-end POS
- Pop-in Displays
- Roll-up Window Shades

Need printed samples?
 See, touch and feel our entire wide format print media line.
 Give us a call for more details.
(951) 808-9443

Ideas that Stick

Adhesive Vinyl

Several applications with permanent and removable adhesives.



BEST FOR INDOOR/OUTDOOR BUBBLE-FREE MOUNTING

VMBF

Matte bubble-free vinyl with removable adhesive



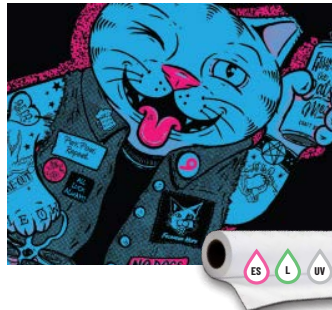
With increased dimensional stability, this PE stay flat coated liner and air egress technology allows for easy, bubble-free installation. Solid grey removable adhesive to provide extra blackout for anything under the graphic, allowing your images to "pop." Use on windows or any smooth mounting surface. This product works well with all print & cut systems.

- Window Display
- Print and Cut Decals
- Contour-cut / Transfer Tape
- Rigid Boards

BEST FOR INDOOR/OUTDOOR BUBBLE-FREE MOUNTING

VGBF

Gloss bubble-free vinyl with removable adhesive



With increased dimensional stability, this PE stay flat coated liner and air egress technology allows for easy, bubble-free installation. Solid grey removable adhesive to provide extra blackout for anything under the graphic, allowing your images to "pop." Use on windows or any smooth mounting surface. This product works well with all print & cut systems.

- Window Display
- Print and Cut Decals
- Contour-cut / Transfer Tape
- Rigid Boards

BEST FOR INDOOR/OUTDOOR MOUNTED DISPLAYS

VSMV

Everyday matte vinyl with permanent adhesive



VSMV is our new and improved everyday matte option for adhesive vinyl applications. We have improved the vinyl's dimensional stability, which makes installation much easier with less stretching compared to other vinyl products on the market. It has a very accurate, true white point that provides excellent color gamut and print resolution. Equipped with a double-side PE coated liner, this helps keeps production flat on printers that run high cure temps. The solvent acrylic adhesive provides long term adhesion.

- True White Point
- Matte Finish
- Permanent Adhesive
- 4.5 mil Shrink Resistant Vinyl
- Dimensionally Stable
- Easy to Install

BEST FOR INDOOR/OUTDOOR MOUNTED DISPLAYS

VSMV6

Vivid thick matte vinyl with permanent adhesive



VSMV6 is our go-to heavy matte option for everyday adhesive vinyl applications. It has an extremely bright white points providing excellent color gamut. Along with a double-side PE coated liner making sure your decals stay flat, and feed easily through printers running high heat elements. The solvent acrylic blended permanent adhesive provides longer term adhesion.

- Decals
- Flexible Mounted Signage
- Trade Show Graphics
- Indoor/Outdoor Signage
- Contour Cut Graphics/ Print & Cut Systems

BEST FOR INDOOR/OUTDOOR MOUNTED DISPLAYS

VSGV

Everyday gloss vinyl w/permanent adhesive



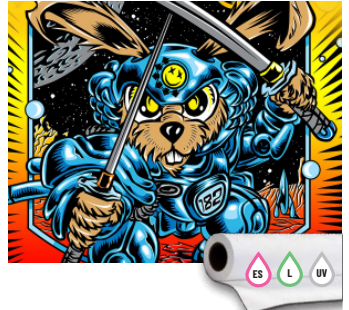
VSGV is our new and improved everyday gloss option for adhesive vinyl applications. We have improved the vinyl's dimensional stability, which makes installation much easier with less stretching compared to other vinyl products on the market. It has a very accurate, true white point that provides excellent color gamut and print resolution. Equipped with a double-side PE coated liner, this helps keeps production flat on printers that run high cure temps. The solvent acrylic adhesive provides long term adhesion.

- Decals
- Flexible Mounted Signage
- Trade Show Graphics
- Indoor/Outdoor Signage
- Contour Cut Systems

BEST FOR INDOOR/OUTDOOR MOUNTED DISPLAYS

VSGV6

Vivid thick gloss vinyl with permanent adhesive



VSGV6 is our go-to heavy gloss option for everyday adhesive vinyl applications. It has an extremely bright white points providing excellent color gamut. Along with a double-sided PE coated liner making sure your decals stay flat, and feed easily through printers running high heat elements. The solvent acrylic blended permanent adhesive provides a longer term adhesion.

- Decals
- Flexible Mounted Signage
- Trade Show Graphics
- Indoor/Outdoor Signage
- Contour Cut Graphics/ Print & Cut Systems



Que's Unique PRISM Series



Our new tinted holographic PVC adhesive vinyl is the perfect solution for eye catching contour cut graphics and packaging labels. This product has a thin layer of holographic PET film providing the holographic color shift effect, and the rest of the print product is made up of traditional PVC vinyl. This means that this product will perform great on contour cutters for stickers and signage. We make a wide variety of different color shift options, ensuring your branding will stand out in any store/retail environment!

PRISM-G
GREEN HOLOGRAPHIC PVC Vinyl w/
Permanent Adhesive



PRISM-H
HOLOGRAPHIC PVC Vinyl w/
Permanent Adhesive



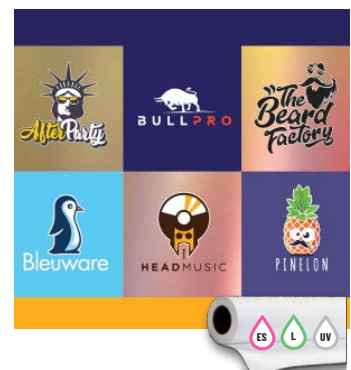
PRISM-P
PINK HOLOGRAPHIC PVC Vinyl w/
Permanent Adhesive



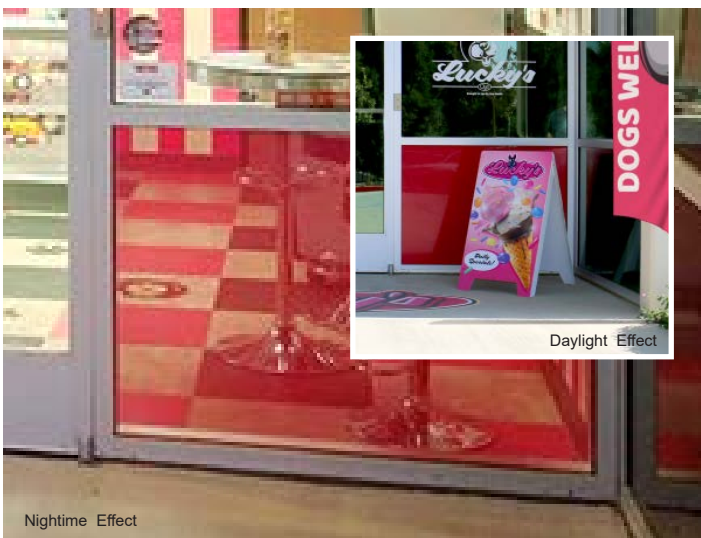
PRISM-B
BLUE HOLOGRAPHIC PVC Vinyl w/
Permanent Adhesive



PRISM-RG
ROSE/GOLD HOLOGRAPHIC PVC Vinyl
w/Permanent Adhesive



More Vinyl - Perforated Adhesive



Nighttime Effect

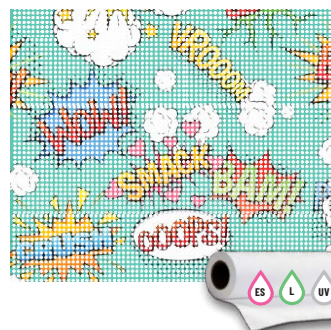
Compare:

60/40 View-through

This perforated vinyl yields 60% of printable area allowing 40% of viewing through the window.

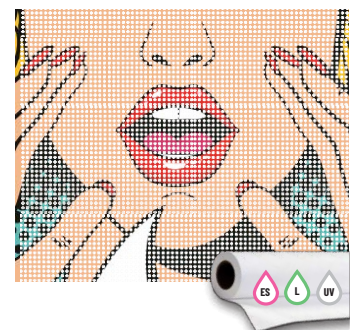
BEST FOR ONE-WAY VISION INDOOR/
OUTDOOR WINDOW DISPLAY

ECOWV
Perforated vinyl 70/30 ratio w/
removable adhesive dual paper liner



BEST FOR VIEW THROUGH
WINDOW DISPLAY

6040.OWVCL
Perforated vinyl 60/40 ratio w/removable
adhesive dual liner



The 70/30% perforation pattern allows for the maximum print surface, making it ideal for all retail exterior-mount window graphics requiring small detail and text. Clear adhesive, removable up to one year. The dual perforated paper liner protects printer beds.

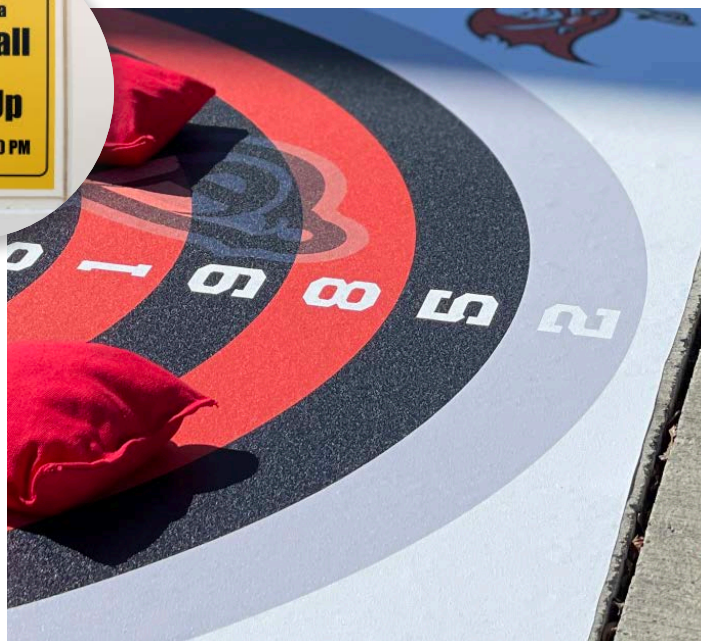
- POP Decals
- Retail and Commercial
- Window Signage

This 60% print surface, white face and black back perforated film is designed for vivid store-front graphic visibility with added view through percentage, so better view of outside customers can be achieved. The thicker 8mil vinyl stretches less and is easier to handle than economy products. Its dual OPP clear liner absorbs ink so your hands stay clean during installation. Twice the standard perforated hole depth to work with Eco-Solvent, UV, and Latex print platforms.

- Glass Doors
- POP Decals
- Retail & Commercial Window Signage



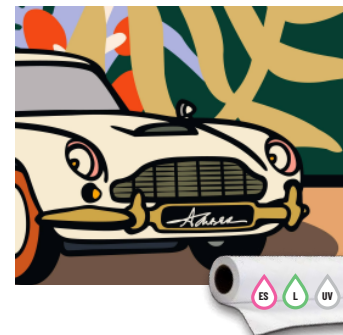
Indoor/Outdoor Durable Adhesive Media for Floor, Wall & Surfaces



**BEST FOR PERMANENT OR
REMOVABLE ADHESIVE SIGNAGE**

SPPMP

Matte Blockout Polypropylene w/
Permanent Adhesive



**BEST ON OUTDOOR SURFACES
INCLUDING ASPHALT**

TASQUEFORCE

Matte outdoor "1-Step" floor graphic
media with ANSI Anti-Slip Certification



Maximize outdoor advertising and messaging space by adding graphics to concrete, carpet, asphalt, and any other semi-rough surfaces. Matte finished hybrid fabric with sandpaper-like grit for added anti-slip protection. Bright white point for outstanding color gamut and sharp resolution. TASQUEFORCE is tear resistant making removal an easy process. Heavy duty paper liner for easy contour cutting. TASQUEFORCE is a must have for any event or business looking for an amazing advertising product at a phenomenal price!

- Concrete Graphics
- Smooth Asphalt Graphics
- Rough Interior Floor Graphics
- Semi-Rough Surface Graphics

**BEST FOR FLOOR AND
COUNTER ADVERTISEMENTS**

TASQUE

UL410 (SA34033) matte anti-slip white
vinyl w/ high tac adhesive



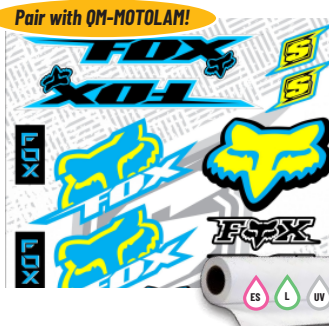
Matte textured 6 mil white vinyl with clear high tack adhesive is designed for Eco-Solvent, UV and Latex-based inkjet printing. This high quality, budget-friendly film can be used for promotions such as, floor graphics, table surfaces and POP displays. Up to 1 year outdoor durability & 3 year indoor durability.

- Floors
- Table Tops
- Counter Displays

**BEST FOR VIEW THROUGH
WINDOW DISPLAY**

MOTOPRINT

Gloss Polymeric PVC Vinyl with High
Tack Permanent Air Egress Adhesive



This 60% print surface, white face and black back perforated film is designed for vivid store-front graphic visibility with added view through percentage, so better view of outside customers can be achieved. The thicker 8mil vinyl stretches less and is easier to handle than economy products. Its dual OPP clear liner absorbs ink so your hands stay clean during installation. Twice the standard perforated hole depth to work with Eco-Solvent, UV, and Latex print platforms.

- Rigid Board Signage
- Packaging Labels
- Event Graphics
- Durable Permanent
- Label Applications

**BEST FOR REMOVABLE
WINDOW DISPLAY**

SPPMR

Matte Blockout Polypropylene w/
Removable Adhesive



Developed as a long lasting, tear resistant, shrink resistant alternative to traditional PVC Vinyl adhesive products. Equipped with blockout and a solvent acrylic adhesive, makes it a perfect choice for rigid board signage, long lasting contour cut stickers, and other labeling applications. Economical and PVC-Free, this product is an excellent alternative to the more expensive polymeric adhesive vinyls on the market.

- Glass Doors
- POP Decals
- Retail & Commercial Window Signage

Many of Que's products are cross-platform compatible.
Take a look at the ink icons to the right. These icons
will appear throughout this guide to all media that applies.



Canvas, Textiles, and Photo Papers for that Perfect Look and Feel

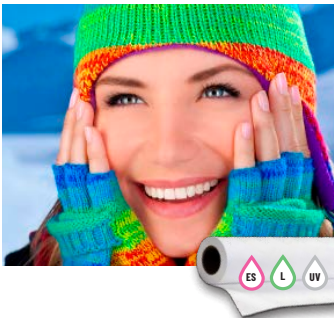


- Eco-friendly fabrics - 100% recyclable polyester.
- Soft signage, roll-up banner displays, backdrops, flag, and artist displays.
- All of our fabrics are woven at our factory under the highest quality conditions.

BEST FOR GLOSSY PHOTO REPRODUCTION

SGLP9

Professional gloss photo paper



This is not like the “standard” solvent photo papers on the market. SGLP9 is a true, professional grade (RC coated), high gloss photo paper that produces exceptional results. This 250 gsm photo paper is the perfect weight and can be used with any eco solvent, latex and UV print systems.

- Photo Reproduction
- Gallery and Artist Renditions
- Wedding Photography
- High-end Posters

BEST FOR INDOOR/OUTDOOR MATTE CANVAS REPRODUCTION

SATCAN

Professional satin solvent coated polyester/cotton canvas



SATCAN is a 35% Cotton / 65% Polyester blend that is a stretchable, crack-resistant canvas. Unlike most solvent canvas products, SATCAN provides a consistent satin printing surface that allows for extremely wide color gamut, rich black densities, while still offering the traditional artist’s texture look and feel.

- Great for Indoor Gallery Wrap
- Backdrops & Signage
- Photo Reproduction

BEST FOR HEAVY WEIGHT DURABLE SOFT SIGNAGE

OMNI500

Satin Universal Textile Banner



Our most versatile textile banner. Water and scratch resistant. Suitable for indoor/outdoor banners, and also décor canvas prints and gallery wraps. Can be easily sewn and grommeted with banner tabs.

- Best Scrim Banner Alternative
- Indoor/Outdoor Banners
- Backdrops
- Soft Signage
- Canvas Alternative
- Gallery Wraps
- Photo Printing

BEST FOR FAUX CANVAS GALLERY WRAPS

QFABRIC

600 x 600D Polyester Fabric



QFABRIC has a weave pattern that looks and feels like a true Polyester-Cotton blended canvas. The benefit of QFABRIC is to have the look, the feel, and the print resolution of a true poly/cotton fine art canvas, yet it is 100% polyester which makes it far more price competitive and will not sag when gallery wrapped, unlike “traditional” poly/cotton canvases. This super heavy 100% polyester fabric is very versatile and can be used for almost any application. A strong 600x600 denier makes it a great option for banners and also décor art printing. It can easily be Class 5 recycled, making a great eco-friendly soft signage solution. The photos-on-canvas market is always evolving, so get out ahead of the pack with QFABRIC!

- Canvas Alternative
- Gallery Wraps
- Hanging Banners
- Roll Up Banners



Need printed samples?

See, touch and feel our entire wide format print media line.

Give us a call for more details.

(951) 808-9443

For a PVC-free option, consider **OMNI500!**

Choosing the Right Banner Offers Long Term Solutions

For Indoor/Outdoor use. Durability and finishing are the two main issues to consider when choosing banner material. Scrim banner is best and most common for durability with solvent ink systems. For indoor use, consider non woven banner for easier recycling and big savings on shipping.

- Durable Scrim can be finished in a variety of ways: sewn, banner tabs, or grommets.
- Our scrim banner contains a polyester fabric center with PVC adhered to both sides.



BEST FOR HEAVY WEIGHT DURABLE SOFT SIGNAGE

OMNI500

Satin Universal Textile Banner



Our most versatile textile banner. Water and scratch resistant. Suitable for indoor/outdoor banners, and also décor canvas prints and gallery wraps. Can be easily sewn and grommets with banner tabs.

- Best Scrim Banner Alternative
- Indoor/Outdoor Banners
- Backdrops
- Soft Signage
- Canvas Alternative
- Gallery Wraps
- Photo Printing

BEST FOR INDOOR & OUTDOOR GLOSS SCRIM BANNERS

LX13G

13 oz. gloss frontlit fire retardant scrim banner



LX13G is a premium 13 oz gloss frontlit banner material that is compatible with latex, solvent and UV inks. Its 1000 x 1000 denier creates a high tensile and tear strength banner. The fire retardant coating allows it to be used in all environments.

- Frontlit Banners
- Display Systems
- Grommets Banners
- POP Display

BEST FOR INDOOR & OUTDOOR MATTE SCRIM BANNERS

LX13M

13 oz. matte frontlit fire retardant scrim banner



LX13M is a premium 13 oz matte frontlit banner material that is compatible with latex, solvent and UV inks. Its 1000 x 1000 denier creates a high tensile and tear strength banner. The fire retardant coating allows it to be used in all environments.

- Frontlit Banners
- Display Systems
- Grommets Banners
- POP Display

BEST FOR FENCE/CONSTRUCTION SITE ADVERTISEMENTS

QM-MAXVUE

Mesh 50/50 view PVC Banner w/removable liner



Our 14 mil mesh banner with liner is reinforced with polyester scrim for added durability. The liner makes the printing process easier by preventing ink spray through and helping the media to feed easily through the printer. 50% hole to substrate ratio allows for vivid images and a 37% airflow.

- Outdoor Banners
- Window Signage
- Fence Signage
- Job Site Signage
- Hanging Banners

Compare:

Scrim Banner

Most common and durable for both indoor and out with aqueous ink systems. Durable Scrim can be finished in a variety of ways, sewn, banner tabs or with grommets. All scrim banner contains a polyester fabric center with PVC adhered to both sides.

Polyester Fabrics

Que Media's woven polyester fabrics are a great alternative to rising costs of PVC Scrim Banner. Soft Signage PVC-Free polyester fabrics are growing in demand. Polyester Fabrics give you the advantage of equivalent tensile strength, lighter shipping weights, and the huge benefit of no edge shrinking like traditional PVC scrim banner products.



Laminates for Protection and Finish

- "Cold" pressure sensitive over-laminate
- Solvent acrylic adhesive for the strongest adhesion and long term reliability
- For use with any film or smooth vinyl
- Protects from scratches, handling, and water

LAMINATION FILMS BEST FOR VARIOUS APPLICATIONS



General, everyday laminate with "cold" solvent acrylic pressure sensitive permanent adhesive. PVC base works well with almost any media type, unlike heat-assisted laminates.

LAMST

Satin pressure sensitive lamination film with liner

LAMTXT6

Textured pressure sensitive lamination film with liner

LAM8TAS

UL410 (SA34033) matte anti-slip pressure sensitive lamination film with liner

LAMMT

Matte pressure sensitive lamination film with liner

LAMGL

Gloss pressure sensitive lamination film with liner

Pair with QM-MOTOPRINT!



MOTOLAM

High-durability PVC pressure sensitive laminate film

QEs & As

Q: Why Laminate?

A:

- Protect media
- Enhance colors
- Improve appearance
- Preserve and extend the life and durability of the image when it's a requirement of the application,
- Easy clean up, for graffiti protection.

Many of Que's products are cross-platform compatible. Take a look at the ink icons to the right. These icons will appear throughout this guide to all media that applies.

Identifying Media Ink Sets:





Que Media has developed these products to match the requirements for the following printers:

EPSON[®]  MUTOH  Roland
Mimaki[®] XEROX OKI

Contact your local distributor: