



LATEX

Media Application Guide

Majestic Aqueous Gloss Media

Monarch Aqueous Matte Media

Motif Specialty Aqueous Media

Magnate Eco Solvent, Latex & UV Media

Marquis Digital Media

Millennium Laminates





LATEX



Most of our latex products are designed to work with multiple print platforms. Que Media's coatings are formulated to hold large ink loads in a very stable format to avoid ink bleeding and protect the ink from water damage or smearing.

Our latex products are also compatible with UV printers.

This guide is designed to simplify the process of choosing the right latex and/or cross platform media for the job. Each category shows the highest recommended latex compatible products.



- **Lightweight Roll-up and POP-IN Solutions**
- **More...Trade Show and POP-IN Display Film Solutions**
- **Double Sided Printing for That Perfect Look and Feel**
- **Self Adhesive for Permanent Mounting Applications**
- **Canvas, Textiles, and Photo Papers for that Perfect Look and Feel**
- **Choosing the Right Banner Offers Long Term Solutions**
- **Easy On, Easy Off! The Best Fabric for Smooth Surface Durable Display**
- **Bright Ideas Start with the Right Backlit Media**
- **Amazing Displays with Easy to Install View-thru Window Display**



Many of Que's products are cross-platform compatible. Take a look at the ink icons to the right. These icons will appear throughout this guide to all media that applies.

Identifying Media Ink Sets:



Choosing the Right POP Media...

Lightweight Roll-up and Pop-in Solutions

Choosing the right roll up display film is a matter of balancing cost and durability. Compare the products here. You'll be sure to find the media that suits your application.



BEST CHOICE FOR LIGHTWEIGHT DURABLE SOFT SIGNAGE

TRITEX7
Light weight matte hybrid banner



TRITEX7 is a very unique product. Slightly softer than polypropylene but with much more strength and durability, TRITEX7 is virtually tearproof. Use this low cost solution for all of your banner needs. For best results, print with latex or UV platforms.

- Hanging Flags
- Posters
- Maps & Architectural Plans

BEST FOR SHORT TERM BLOCKOUT ROLL-UP BANNERS

WRPPBO
Hybrid matte blockout stay-flat polypropylene



Smooth, matte porous top coating will not only allow for heavy ink saturation with aqueous inks but works extremely well with latex and UV inks producing vivid graphics. The blockout layer keeps your display bright with no wash-out. The perfect solution to short-term trade show displays and posters.

- Window Application with Mounting Adhesive
- Durable Posters
- Trade Show Display
- Economical

BEST FOR LOW GLARE DURABLE ROLL-UP DISPLAYS

SUBRG
Hybrid textured satin grey back blockout film



SUBRG's rich, anti-glare texture will show exceptionally well in banner stand applications. The dark gray back will keep your images bright with no wash-out. Designed to lay-flat, this hybrid film is a cost effective option over PET film.

- Roll-Up Banners
- Indoor/Outdoor Signage
- Poster POP
- Movie Posters & Product Spotlights

BEST FOR RIGID POP-IN/POP-OUT DISPLAYS

SPOP
Hybrid satin anti-scratch semi-rigid blockout grey back film



With its perfect blend of rigidity and flexibility for easy handling, this Pop film can be laminated for increased protection but is not necessary. Strong enough for multiple display insertions without breaking, tearing or chipping. 100% block-out.

- Trade Show Booths
- High-End POS
- Pop-In Display

Compare

STRONG Polypropylene (PP)

Economical choice for short term banners and POS signage. Good tear resistance.

STRONGER Polyester (PET)

Best choice for durable banners and POS signage. Tear resistant and lay-flat properties.

STRONGEST Hybrid

Hybrid products such as, Polypropylene with Polyester offer a lower cost alternative with added benefits.

Lighting Issues?

Consider Economical Blockout Film

With light sources flooding retail and outdoor spaces, it's no wonder blockout media is the go-to solution!



BEST FOR ECONOMICAL TWO-SIDED BLOCKOUT DISPLAYS

QM-SWRPPB02S

2-sided blockout matte polypropylene



Double-sided bright white matte top coated with blockout to produce colorful 2-sided printing. The perfect solution for trade show displays, posters, double sided window graphics, and snap-in sign stands requiring two-way traffic.

- Low Cost Roll-Up Displays
- Banner Stands
- POP-IN Displays
- Sign Stands
- "Push-Pull" Window Graphics
- Trade Show Displays
- Hanging Signs

BEST FOR HI-END ROLL-UP BANNERS & DISPLAYS

SBOB

Hybrid matte blockout film



SBOB is now equipped with a smooth print surface, making it a great choice to pair with one of our Millennium PVC Laminates. SBOB has a multi-layered composition, combining different formulations of film to provide optimal "lay flat" banner presentation for just about any type of display. 100% blockout and capable of high print resolution, alongside great indoor/outdoor durability. SBOB has become one of our premier blockout films on our product line.

- Trade Show Displays
- Banner Stands
- POP Displays
- Hanging Banners

Need printed samples?
 See, touch and feel our entire wide format print media line.
 Give us a call for more details.
(951) 808-9443



Ideas that Stick!

Adhesive Vinyl

Applications with permanent and removable adhesives.



BEST FOR INDOOR/OUTDOOR MOUNTED DISPLAYS

VSGV

Everyday gloss vinyl w/permanent adhesive



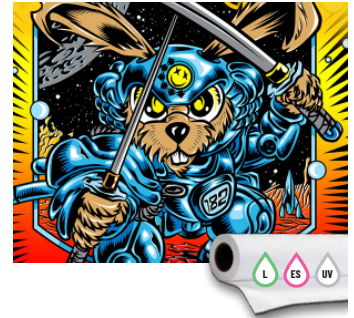
VSGV is our new and improved everyday gloss option for adhesive vinyl applications. We have improved the vinyl's dimensional stability, which makes installation much easier with less stretching compared to other vinyl products on the market. It has a very accurate, true white point that provides excellent color gamut and print resolution. Equipped with a double-side PE coated liner, this helps keep production flat on printers that run high cure temps. The solvent acrylic adhesive provides long term adhesion.

- Decals
- Flexible Mounted Signage
- Trade Show Graphics
- Indoor/Outdoor Signage
- Contour Cut Systems

BEST FOR INDOOR/OUTDOOR MOUNTED DISPLAYS

VSGV6

Vivid thick gloss vinyl with permanent adhesive



VSGV6 is our go-to heavy gloss option for everyday adhesive vinyl applications. It has an extremely bright white points providing excellent color gamut. Along with a double-side PE coated liner making sure your decals stay flat, and feed easily through printers running high heat elements. The solvent acrylic blended permanent adhesive provides longer term adhesion.

- Decals
- Flexible Mounted Signage
- Trade Show Graphics
- Indoor/Outdoor Signage
- Contour Cut Graphics/ Print & Cut Systems

BEST FOR INDOOR/OUTDOOR BUBBLE-FREE MOUNTING

VMBF

Matte bubble-free vinyl with removable adhesive



With increased dimensional stability, this PE stay flat coated liner and air egress technology allows for easy, bubble-free installation. Solid grey removable adhesive to provide extra blackout for anything under the graphic, allowing your images to "pop". Use on windows or any smooth mounting surface. This product works well with all print & cut systems.

- Window Display
- Print and Cut Decals
- Contour-cut / Transfer Tape
- Rigid Boards

BEST FOR INDOOR/OUTDOOR BUBBLE-FREE MOUNTING

VGBF

Gloss bubble-free vinyl with removable adhesive



With increased dimensional stability, this PE stay flat coated liner and air egress technology allows for easy, bubble-free installation. Solid grey removable adhesive to provide extra blackout for anything under the graphic, allowing your images to "pop". Use on windows or any smooth mounting surface. This product works well with all print & cut systems.

- Window Display
- Print and Cut Decals
- Contour-cut / Transfer Tape
- Rigid Boards

BEST FOR INDOOR/OUTDOOR MOUNTED DISPLAYS

VSMV

Everyday matte vinyl with permanent adhesive



VSMV is our new and improved everyday matte option for adhesive vinyl applications. We have improved the vinyl's dimensional stability, which makes installation much easier with less stretching compared to other vinyl products on the market. It has a very accurate, true white point that provides excellent color gamut and print resolution. Equipped with a double-side PE coated liner, this helps keep production flat on printers that run high cure temps. The solvent acrylic adhesive provides long term adhesion.

- True White Point
- Matte Finish
- Permanent Adhesive
- 4.5 mil Shrink Resistant Vinyl
- Dimensionally Stable
- Easy to Install

BEST FOR INDOOR/OUTDOOR MOUNTED DISPLAYS

VSMV6

Vivid thick matte vinyl with permanent adhesive



VSMV6 is our go-to heavy matte option for everyday adhesive vinyl applications. It has an extremely bright white points providing excellent color gamut. Along with a double-side PE coated liner making sure your decals stay flat, and feed easily through printers running high heat elements. The solvent acrylic blended permanent adhesive provides longer term adhesion.

- Decals
- Flexible Mounted Signage
- Trade Show Graphics
- Indoor/Outdoor Signage
- Contour Cut Graphics/ Print & Cut Systems

Fabric

Roll-up banners, hanging fabric banners, trade show displays, and durable flags.

Canvas

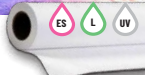
Museum galleries, home decor, and photographic reproduction.



BEST FOR FAUX CANVAS GALLERY WRAPS

QFABRIC

600 x 600D Polyester Fabric



QFABRIC has a weave pattern that looks and feels like a true Polyester-Cotton blended canvas. The benefit of QFABRIC is to have the look, the feel, and the print resolution of a true poly/cotton fine art canvas, yet it is 100% polyester which makes it far more price competitive and will not sag when gallery wrapped, unlike "traditional" poly/cotton canvases. This super heavy 100% polyester fabric is very versatile and can be used for almost any application. A strong 600x600 denier makes it a great option for banners and also décor art printing. It can easily be Class 5 recycled, making a great eco-friendly soft signage solution. The photos-on-canvas market is always evolving, so get out ahead of the pack with QFABRIC!

- Canvas Alternative
- Gallery Wraps
- Hanging Banners
- Roll Up Banners

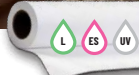
Canvas and Textiles for That Perfect Look and Feel

- Soft signage, roll-up banner displays, backdrops, flag and artist displays.
- Eco friendly fabrics - 100% recyclable polyester.
- All of our fabrics are woven at our factory under the highest quality conditions.

BEST FOR INDOOR/OUTDOOR MATTE CANVAS REPRODUCTION

SATCAN

Professional satin solvent coated polyester/cotton canvas



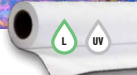
SATCAN is a 35% Cotton / 65% Polyester blend that is a stretchable, crack-resistant canvas. Unlike most solvent canvas products, SATCAN provides a consistent satin printing surface that allows for extremely wide color gamut, rich black densities, while still offering the traditional artist's texture look and feel.

- Great for Indoor Gallery Wrap
- Backdrops & Signage
- Photo Reproduction

BEST FOR ARCHIVAL FINE ART REPRODUCTION

POLCAN

Archival grade matte WR coated polyester/cotton canvas



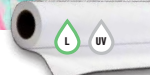
Exceptional quality canvas for the most discerning printer. Compare it to any competitive matte canvas and you will find our POLCAN is truly OBA free and acid neutral which translates to true archival quality. The matte coating accepts heavy ink loads for rich color gamut, true blacks and skin tones. Finish it with liquid laminate for a crack free gallery wrap.

- Museum and Gallery
- Home Decor
- Photographic Reproduction

BEST FOR FAUX CANVAS REPRODUCTION

HVFC

Everyday matte WR coated polyester/cotton canvas



HVFC is a polyester-cotton blended canvas created specifically for the decor market. A low-cost option that delivers exceptional print quality partly due to the extraordinary white point and high DMAX value. Use spray fixative or spray lamination on any matte coating for true crack resistance when stretching.

- Best for Indoor Decor Prints
- Framed Photography, Signage, Backdrops and Murals
- Ideal for Photographic and Art Prints

More Soft Signage Media

BEST FOR FAUX CANVAS GALLERY WRAPS

QFABRIC

600 x 600D Polyester Fabric



QFABRIC has a weave pattern that looks and feels like a true Polyester-Cotton blended canvas. The benefit of QFABRIC is to have the look, the feel, and the print resolution of a true poly/cotton fine art canvas, yet it is 100% polyester which makes it far more price competitive and will not sag when gallery wrapped, unlike "traditional" poly/cotton canvases. This super heavy 100% polyester fabric is very versatile and can be used for almost any application. A strong 600x600 denier makes it a great option for banners and also décor art printing. It can easily be Class 5 recycled, making a great eco-friendly soft signage solution. The photos-on-canvas market is always evolving, so get out ahead of the pack with QFABRIC!

- Canvas Alternative
- Gallery Wraps
- Hanging Banners
- Roll Up Banners

BEST FOR HEAVY WEIGHT DURABLE SOFT SIGNAGE

QM-SPFSS

Super heavyweight satin eco-solvent polyester coated fabric



This super heavyweight polyester fabric can be used for a multitude of applications, hanging banners, theater drops, décor canvas wraps, and outdoor signage. Extremely strong tensile strength and top coated with a satin finish. Can be recycled if using latex inks.

- Hanging Banners or Wall Drape
- Roll Up Banners
- Canvas Alternative
- Theater Backdrops

BEST FOR LIGHT WEIGHT DURABLE SOFT SIGNAGE

PFL

Light weight matte WR coated fabric



This versatile ultra light 100% polyester fabric can be used for many different applications. With a consistent, tight weave pattern, PFL has the special ability to resist feed bunching. PFL can easily be recycled, making it an eco-friendly printing solution.

- Indoor/Outdoor Hanging Flags
- Decorative POS & POP Displays
- Roll-Up Banners
- Soft Signage

BEST FOR MATTE LIGHTWEIGHT DURABLE RECYCLABLE BANNERS

WRMNWF

Durable matte nonwoven fabric



Consider using WRMNWF instead of expensive coated scrim banner. Made from pressed polyester fibers, this ultra strong, ultra light product can be rolled, folded, grommeted, sewn and best of all, recycled. The price point is typically half of what you would spend on a coated scrim allowing you to walk away with higher profit.

- Scrim Banner Alternative and "Green" Printing
- Indoor POP Signage
- Roll-up and Hanging Displays
- Lightweight - Economical to Ship

BEST FOR MEDIUM WEIGHT DURABLE SOFT SIGNAGE

PFH

Heavyweight matte WR coated fabric



This heavy 100% polyester fabric can be used for many different applications, and with a consistent, tight weave pattern, PFH has the special ability to resist feed bunching. Graded heavy weight fabric at 300 Denier, PFH can easily be recycled, making it an eco-friendly printing solution.

- Decor Faux Canvas Prints
- Indoor/Outdoor Hanging Flags
- Decorative POS & POP Displays
- Soft Signage

BEST FOR HEAVY WEIGHT DURABLE SOFT SIGNAGE

OMNI500

Satin Universal Textile Banner



Our most versatile textile banner. Water and scratch resistant. Suitable for indoor/outdoor banners, and also décor canvas prints and gallery wraps. Can be easily sewn and grommeted with banner tabs.

- Best Scrim Banner Alternative
- Indoor/Outdoor Banners
- Backdrops
- Soft Signage
- Canvas Alternative
- Gallery Wraps
- Photo Printing

Choosing the Right Banner

Long Term Solutions

- For Indoor/Outdoor use
- Durability and finishing are the two key factors to consider when choosing banner material.



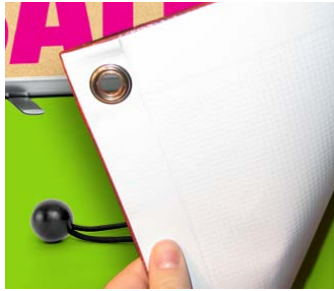
Many of Que's products are cross-platf
Take a look at the ink icons to the right
will appear throughout this guide to all n

Identifying Media Ink Sets:





More Banner Media



BEST FOR INDOOR & OUTDOOR GLOSS SCRIM BANNERS

LX13G

13 oz. gloss frontlit fire retardant scrim banner



LX13G is a premium 13 oz gloss frontlit banner material that is compatible with latex, solvent and UV inks. Its 1000 x 1000 denier creates a high tensile and tear strength banner. The fire retardant coating allows it to be used in all environments.

- Frontlit Banners
- Display Systems
- Grommeted Banners
- POP Display
- Billboards

BEST FOR INDOOR & OUTDOOR MATTE SCRIM BANNERS

LX13M

13 oz. matte frontlit fire retardant scrim banner



LX13M is a premium 13 oz matte frontlit banner material that is compatible with latex, solvent and UV inks. Its 1000 x 1000 denier creates a high tensile and tear strength banner. The fire retardant coating allows it to be used in all environments.

- Frontlit Banners
- Display Systems
- Grommeted Banners
- POP Display
- Billboards

BEST FOR FENCE/CONSTRUCTION SITE ADVERTISEMENTS

MAXVUE

Mesh 50/50 view PVC banner w/ removable liner



Our 14 mil mesh banner with liner is reinforced with polyester scrim for added durability. The liner makes the printing process easier by preventing ink spray through and helping the media to feed easily through the printer. special liner removes easily after high heat Latex printing.

- Outdoor Banners
- Window Signage
- Job Site Signage
- Large advertisements where a "see through" effect is needed

Compare:

Scrim Banner

All scrim banner contains a polyester fabric center with PVC adhered to both sides. Most common and durable for both indoor and outdoor use, and can be sewn, grommeted, or fastened with banner tabs.

Non Woven Banner

Nonwoven fabric is an incredibly strong, light, synthetic material designed to produce tough, durable posters for indoor & outdoor events. Fully recyclable & Eco-friendly.



Easy On, Easy Off!
The Best Fabric
for Smooth
Surface
Durable
Display

- Water Resistant
- Scratch Resistant
- Ultra Strong

TIPS:

BEST FOR CONTOUR CUT WALL GRAPHICS/WALL COVERINGS

EZTAQUELITE Light weight matte fabric w/ removable wall adhesive



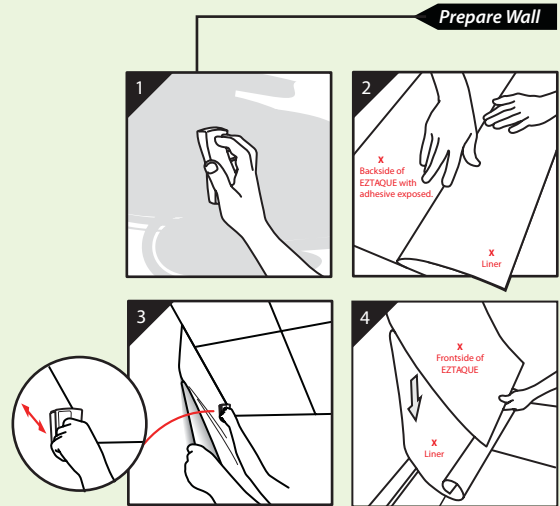
Easy to put up and easy to take down. EZTAQUELITE can be applied without bunching or bubbling in one easy step, and will not stretch out. EZTAQUELITE is scratch resistant and extremely durable. Use this on smooth walls as decor graphics or windows for point of purchase.

- Contour Cut Characters
- Interior Walls
- Window Displays



Full Wall Installation

Easy to install, easily removed! Just follow the simple step-by-step guide below and be sure to get the job done right.

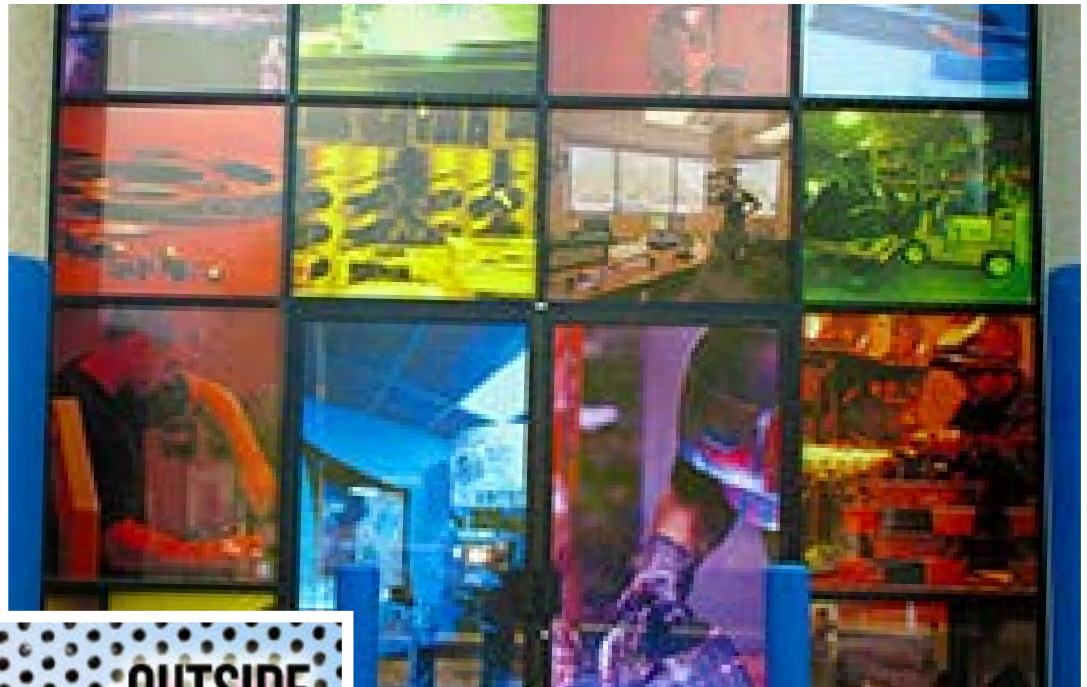


1. Wipe down entire area of wall (*dampened Mr. Clean Magic Eraser recommended*). Allow wall to dry.
2. With the print side down, pull back the liner about 8 inches from the top exposing the adhesive. Crease liner as shown.
3. **CRITICAL STEP** *Two People Recommended* - Starting at the top of the wall, position the exposed adhesive side to the wall flush with the ceiling. Burnish with a roller/squeegee working from the center outward, side to side pushing out any air pockets, while the other person pulls the liner down directly toward the floor.
4. Continue this method until reaching the end of the media at the bottom.

Choosing the Right Film for your Windows...

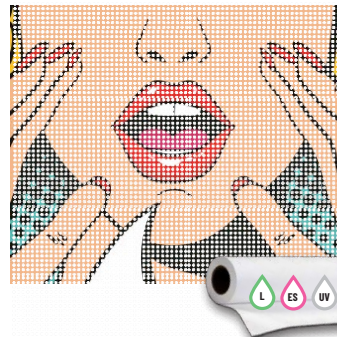
Amazing Displays with Easy to Install View-Through Window Film

When choosing perforated media, the most important aspect is color density. You want your artwork to be brightly colored and easily visible.



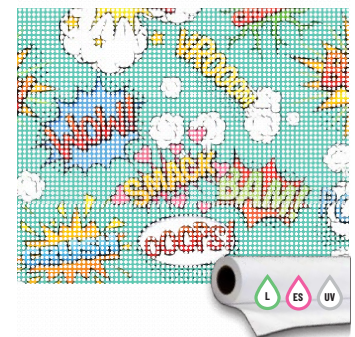
**BEST FOR ONE-WAY VISION
INDOOR/OUTDOOR WINDOW DISPLAY**

6040.ECOWV
Perforated vinyl 60/40 ratio w/
removable adhesive dual paper liner



**BEST FOR INDOOR/OUTDOOR VIEW
THROUGH GRAPHICS**

ECOWV
Perforated vinyl 70/30 ratio w/removable
adhesive dual paper liner



60/40 View Through

This perforated vinyl shows 60% of printable area allowing 40% of viewing through the window.

70/30 View Through

This perforated vinyl shows 70% of printable area allowing 30% of viewing through the window.

The 60/40% perforation pattern allows for the maximum print surface, making it ideal for all retail exterior-mount window graphics requiring small detail and text. Clear adhesive, removable up to one year. The dual perforated paper liner protects printer beds.

- POP Decals
- Retail and Commercial
- Window Signage
- Acrylic Panels
- Trade Show Graphics

The 70/30% perforation pattern allows for the maximum print surface, making it ideal for all retail exterior-mount window graphics requiring small detail and text. Clear adhesive, removable up to one year. The dual perforated paper liner protects printer beds.

- POP Decals
- Retail & Commercial Window Signage
- Glass Doors

Need printed samples?

See, touch and feel our entire wide format print media line.

Give us a call for more details.

(951) 808-9443





Que Media has developed these products to match the requirements for the following printers:

EPSON[®]  MUTOH  Roland
Mimaki[®] XEROX OKI



Contact your local distributor:

