

SureColor F3070

Sales Reference Guide

Redefining Direct-to-Garment Printing



Introducing the Future of Production Garment Printing

The new SureColor F3070 Direct-to-Garment printers deliver breakthrough productivity and cost of ownership with rugged reliability you can count on.

Introducing the SureColor F3070



4-Color + White

\$49,995 *MSRP*

Printer Overview



Printer Overview

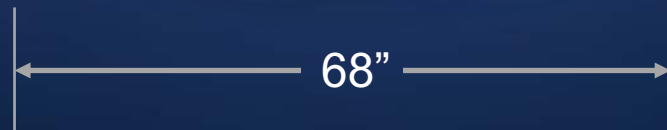


Printer Overview

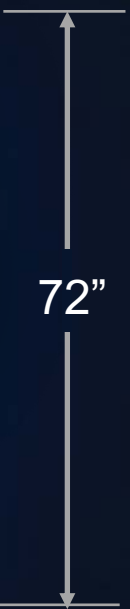
Height



Width



Depth



Printer Overview

Connect to standard available 120V outlet

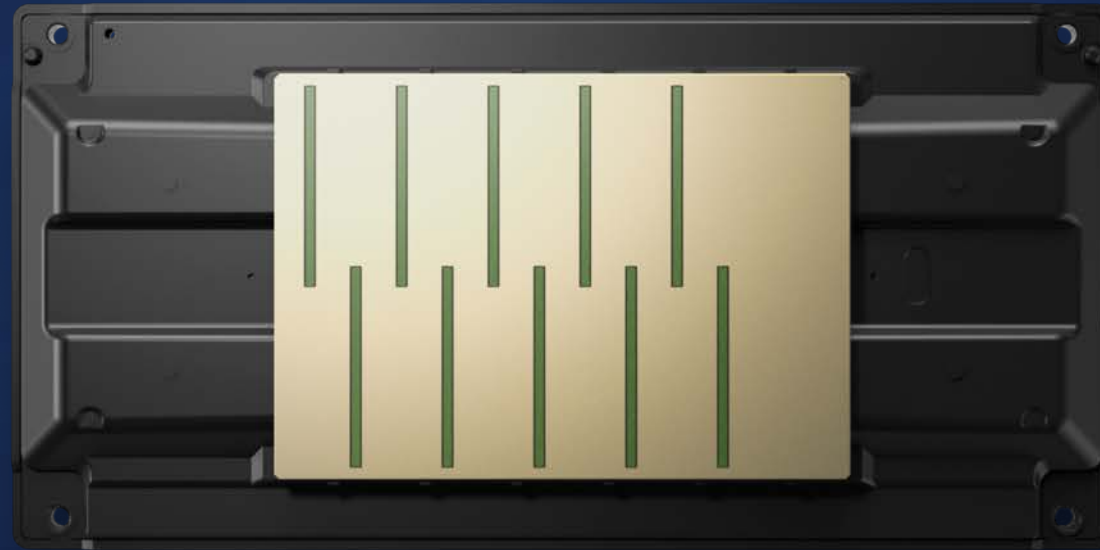
Power Requirements:

- Number of connections: 2 total – Printer x 1, Ink System x 1
Two power cords included (120V NEMA 5-15P to IEC 320-13C)
- Voltage: 100 – 240v AC, 50/60 Hz
- Power Consumption
 - Printing: 168 W
 - Ready: 111 W
 - Sleep: 20 W

Use of a UL Certified surge protector is recommended



PrecisionCore[®] Technology



PRECISIONCORE
PRINTHEAD

Dual PrecisionCore Printheads



High-Performance Printhead Technology

- 8,000 nozzles per printhead x 2 heads = 16,000 total nozzles
- Printhead width of 2.6 inches delivers high productivity with extreme drop placement accuracy for outstanding print quality
- Variable-Sized Droplet Technology with resolution up to 1,200 x 1,200 dpi
- New Nozzle Verification Technology automatically detects nozzle health and can correct without user interruption
- Built-in redundancy allows production to continue should an issue occur
- User replaceable head design can be completed in minutes

UltraChrome DG Ink Technology

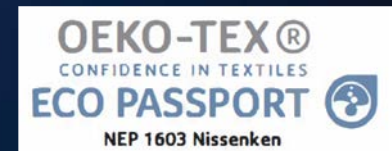


EPSON ULTRACHROME
DG_{INK}

UltraChrome DG Inks

High-Performance Ink Technology

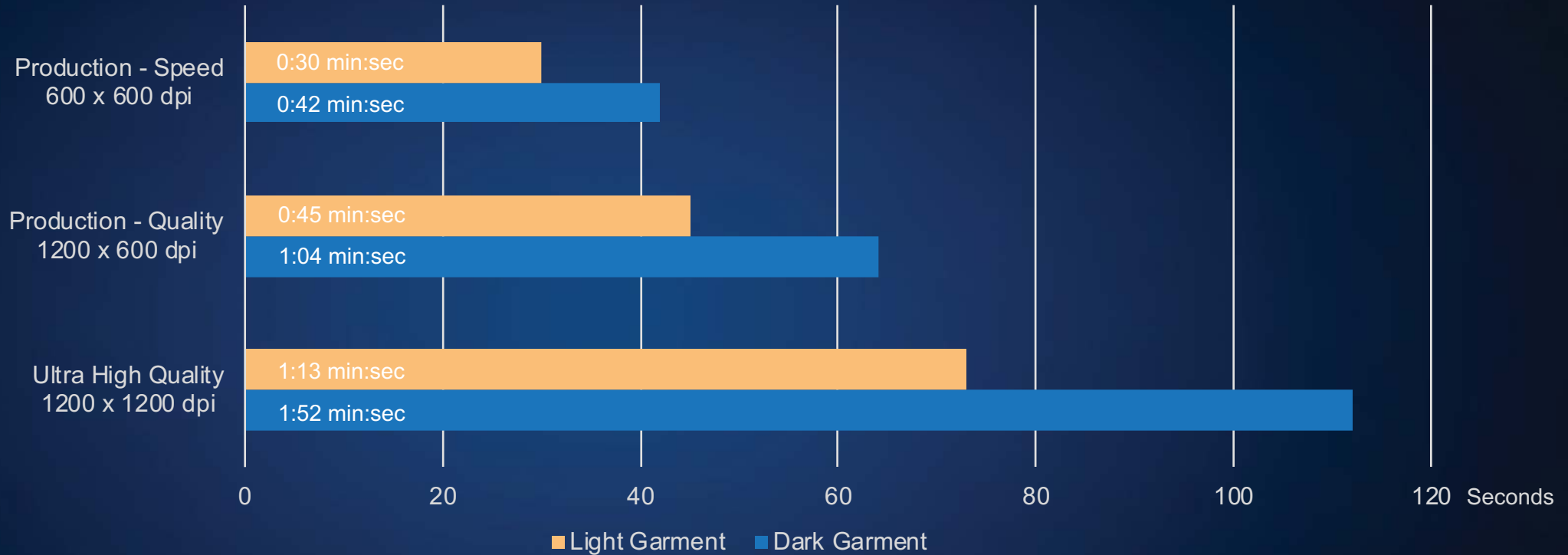
- 5 Color Ink set with high-opaque whites and vibrant colors
- *Oeko-Tex ECO PASSPORT and Global Organic Textile Standard* certified inks
 - When applied to fabric and appropriately fixed, garments have been determined safe for use by adults, children, and babies¹.
- High capacity 1.5 Liter ink packs for less frequent replacement and lower costs
- Ink pack system minimizes waste when compared to traditional cartridge systems



¹ When applied to fabric and appropriately fixed Epson DS ink has passed the standards set by GOTS-ECOCERT (08-01219) and OEKO-TEX® ECO PASSPORT. For further details on these standards please visit www.ecocert.com and www.oeko-tex.com/ecopass.

Print Performance

14" x 16" Print Size



Print time measured reflect the continuous period beginning when the printer start button is pressed, includes the garment entering the printer, ink applied to the garment, garment exiting the printer, and ends when the platen motion stops for garment removal.

Computer processing, network transmission, loading and unloading of garments are not included in these times. Actual print times may vary. Testing conducted by Epson America, Inc. as of June 2020

Printer Features



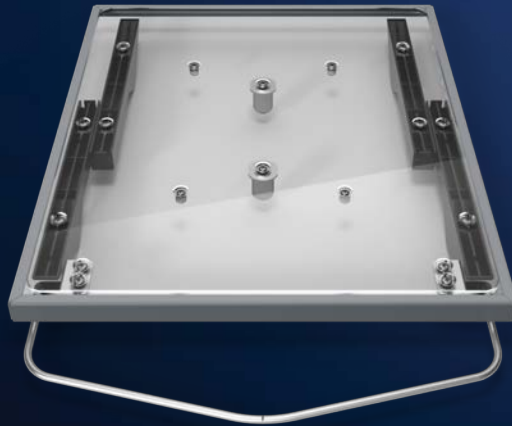
Garment Thickness Optimization



Automatic Garment Thickness Optimization

- Garment thickness measured by 6 sensors during the loading process every 1/100th of a second to create a garment height profile
- Printer determines the garment minimum, average, and maximum heights
- Printhead carriage physically moves up/down to the optimal height as desired by the media settings (min, avg, or max thickness)
- The process is automatic and performed seamlessly in parallel with other pre-print tasks

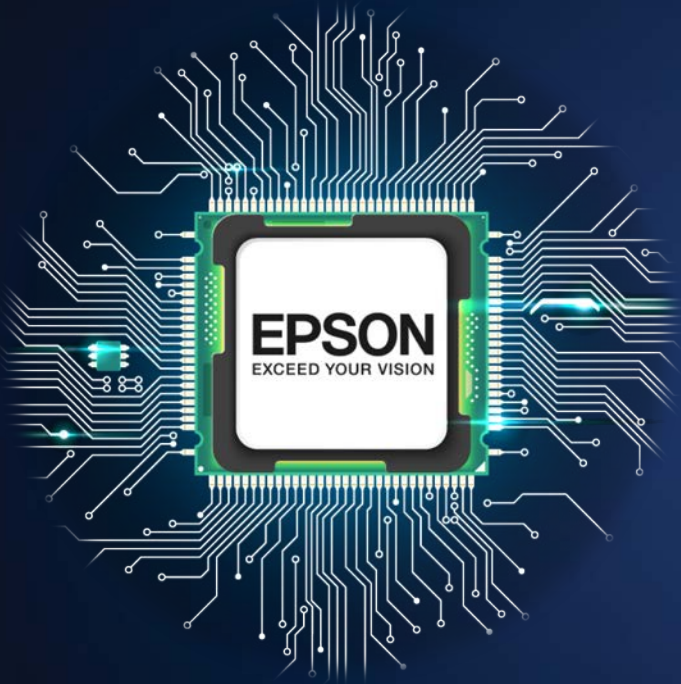
Quick-Load Hanger Grip Platen



High-Speed Garment Loading System

- Hanger platen helps operators quickly load garments with proper alignment
- 2nd Generation Grip Pad reduces loading and unloading time by adhering to the platen surface keeping platen sides smooth for garment to slide easily
- Platen Hoop can be used with the grip pad in place if desired

High Performance Processing

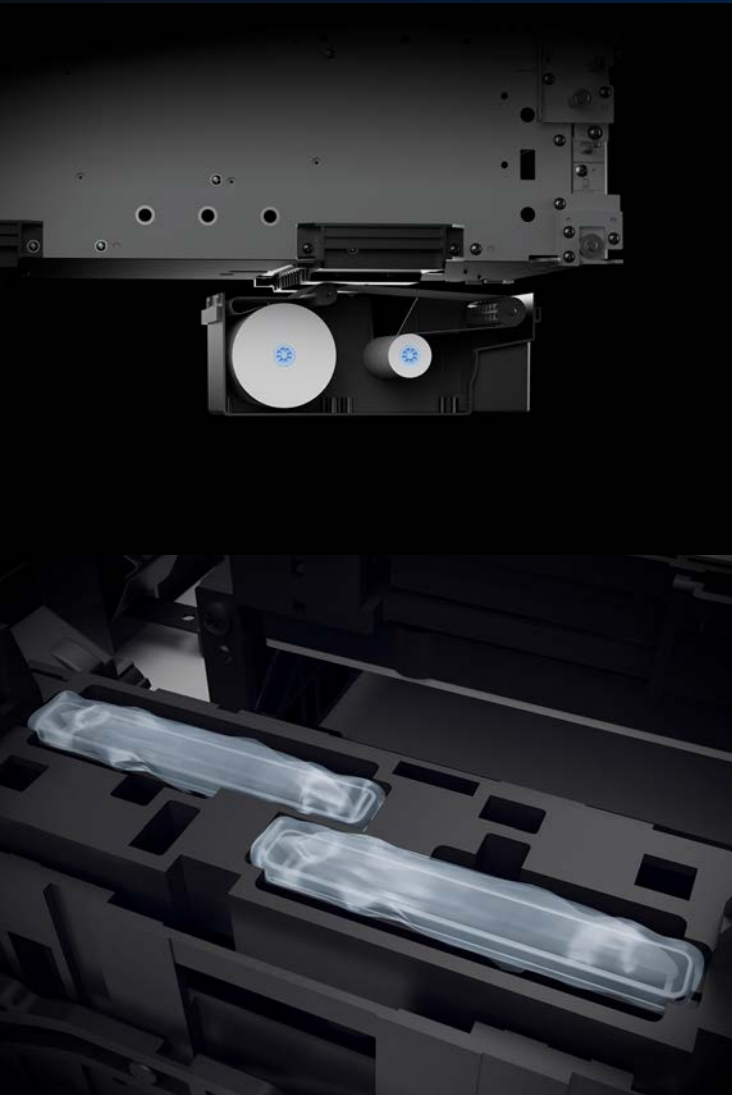


Streamlined Processing for greater productivity

- Print preparation tasks run concurrently with garment loading
- Printer is ready to print as data begins streaming to printer; no need to wait for the entire image to load
- Post-printing tasks are run quickly while user unloads the garment

The result: Less time spent waiting - More time printing

Automated Cleaning System



Head Cleaning Fabric Wiper Cassette

- Maintains both printheads in pristine condition
- Enables dry capping of heads without risk of ink buildup or need for expensive head soaking liquid
- Spend more time printing and less time maintaining - No daily maintenance
- Simple user replaceable cassette last for approximately 2,500 shirts

Automated Cap Cleaning

- Inexpensive maintenance liquid is used to flush the cleaning caps and tubing to prevent ink build up and removal of dust and fibers.
- Minimal user maintenance time required – only a few minutes once a week

Dust & Fiber Control



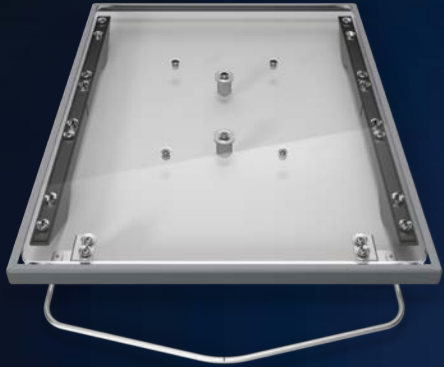
Active Air Filtration

- Airborne dust and fiber is actively removed from the print environment with the use of three active air filters

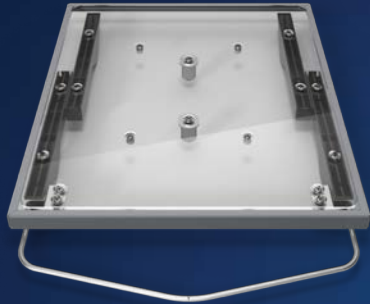
Printhead Dust and Fiber Guard

- Minimizes garment fibers and dust particles from contacting the print head.
- Static charged zones around each printhead minimizes airborne dust and fibers from causing blocked print nozzles
- Automatically cleaned with the printer's fabric wiper

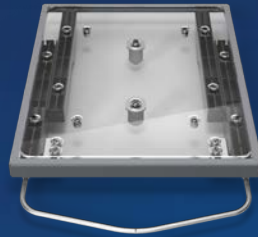
Available Platens



16"x20" Large Hanger



14"x16" Medium Hanger



10"x12" Small Hanger



Large



Medium

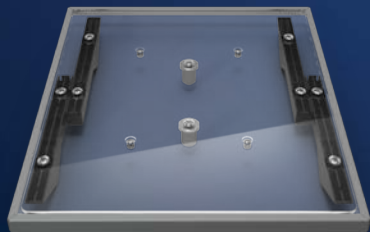


Small

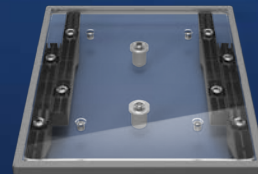
Replacement Fabric Grip Pads



16"x20" Large



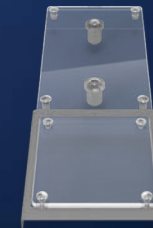
14"x16" Medium



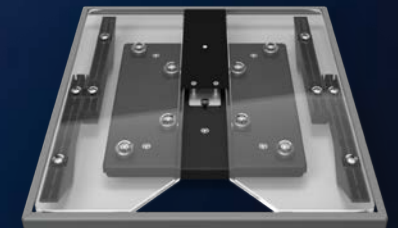
10"x12" Small



7"x8" Extra Small

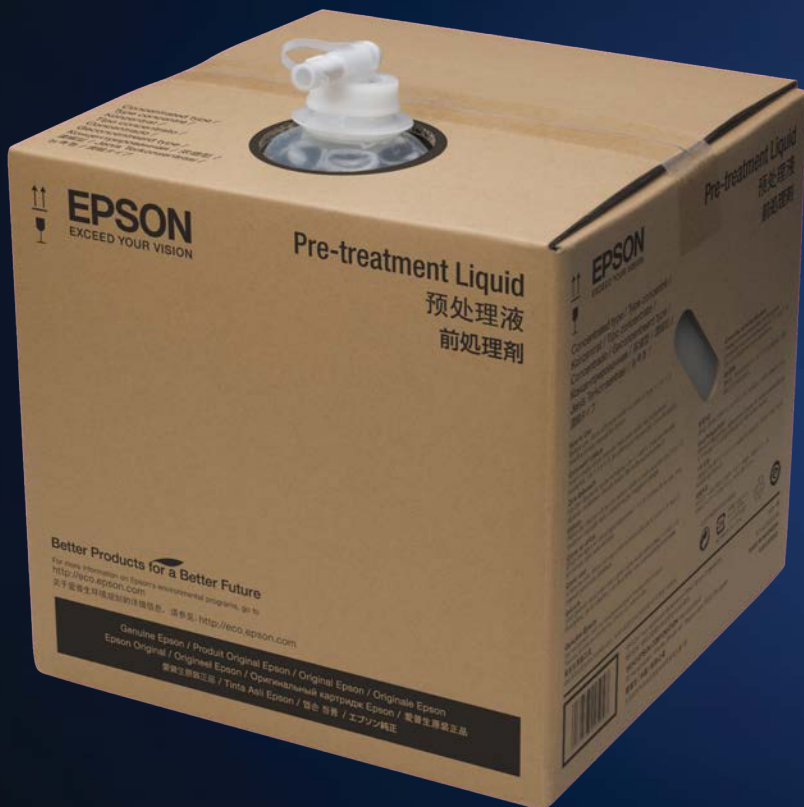


4"x4" Sleeve



14"x16" Grooved
Polo & Zip-Hoodies

Pretreatment Liquid



Developed by Epson Specifically for Epson UltraChrome DG Inks

- Required to bind White Ink to the garment with exceptional durability and opacity
- ECO PASSPORT Tested and Verified by OEKO-TEX
- Meets all international safety requirements

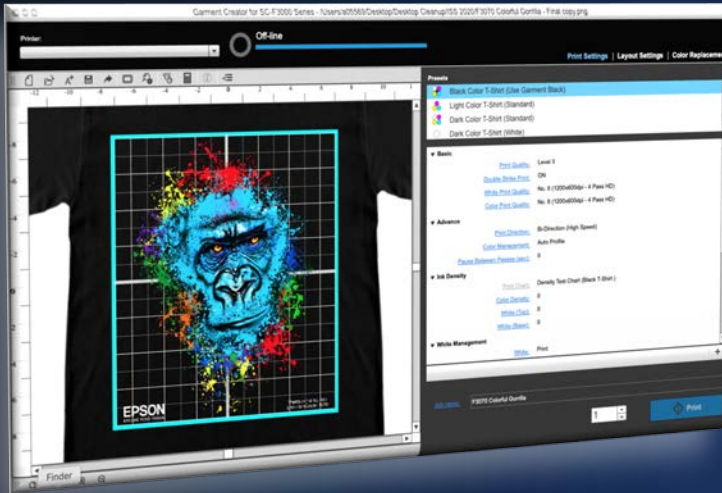
Extremely Soft Hand

- Unlike other pretreatment fluids - the finished garment feels very soft
- No sticky residue or odor

Two formulations - Competitively Priced

- Cotton pretreatment: 20L concentrate yields 60 liters when diluted
- Polyester pretreatment: 18L ready to use

Epson Garment Creator



Advanced DTG Imaging Software Developed by Epson

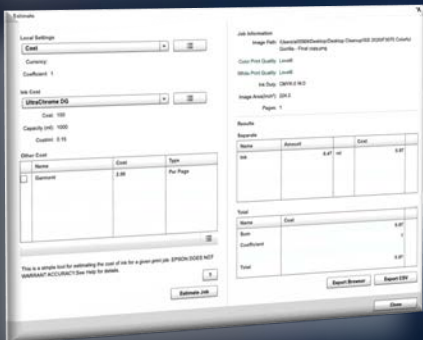
- Raster-based software application supporting sRGB - PNG, TIFF, JPEG and BMP files
- Supports transparency in PNG and TIFF file formats for simplified imaging
- Available for both Apple® macOS® and Microsoft® Windows® platforms

Easy-to-Use Garment Layout

- Choose your platen size, place your image file(s), position, scale, rotate, etc. - then print
- Add multiple images and text for greater customization of the garment
- Very simple interface - quick learning-curve

Robust Dark Garment Controls

- Powerful “Use-Garment-Black” feature for reduced imaging costs on black garments
- Automatic generation of the optimal white ink under-base calculated for each image
- Independent controls for color and white imaging



Epson Cloud Solution PORT



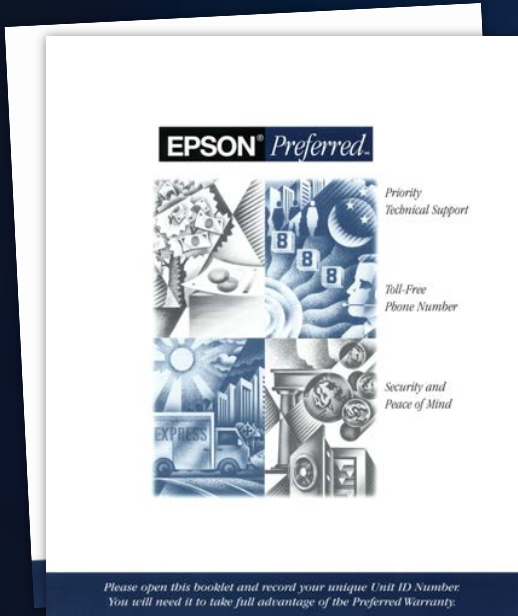
Operational dashboard view of your production line

- Cloud based print fleet activity reporting
- View production rates, printer utilization, up-time, and more from any connected device
- Live production information to help optimize your production efficiency

Epson Preferred Plus Service Programs

Epson Preferred Plus Service Coverage plans include:

- Technical phone support Monday thru Friday from 6:00am until 6:00pm PST
- If required, usually next-business day onsite service.
- Covers the printer, genuine Epson optional accessories, and Epson software
- Can be renewed annually for up to 5 years of coverage
- Select a plan that best fits your business needs:



| | Epson Preferred Plus Plan | Epson Preferred Plus with Print Head Self-Service Plan ¹ |
|--|-----------------------------------|---|
| Service (excluding print head) performed by: | Epson America | Epson America |
| Printhead Replacement performed by: | Epson America | User |
| Print heads included in plan | Yes, Up to 3 print heads per year | No, Print head available at discounted price |
| Service Coverage Period | 1 Year, renewable up to 5 years | 1 Year, 3 Year, or 5 Year plans available. Plans can be mixed to provide coverage up to 5 years |
| Service Plan Price | 1 Year - \$6,895 | 1 Year - \$1,995 3 Year - \$5,095 5 Year - \$6,995 |

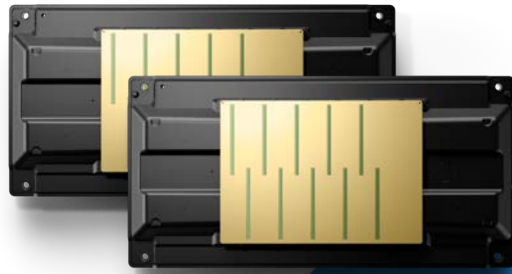
¹ Epson Preferred Plus with Printhead Self-Service plans require enrolment in Epson Cloud Solution PORT. The printer must have Internet connectivity when it is set up and when the customer replaces a print head. Epson recommends that the Printer have a full-time Internet connection to allow customer to access advanced Printer-management features.

Why Epson?



- **Impressive Garment Print Quality**
 - Purpose-built printhead, ink, and printer mechanism – produces outstanding print quality
- **High-Performance Garment Production**
 - One of the fastest garment printers in its price class – runs all day with little downtime
- **Exceptional Printer Reliability**
 - Developed specifically for high-performance, direct-to-garment imaging
- **Low Cost-of-Ownership**
 - Large-capacity 1.5 Liter individual ink packs per color for a low cost-per-ml
 - Attractive printer pricing for fast return-on-investment

Complete Epson Genuine Solution



PrecisionCore Printheads

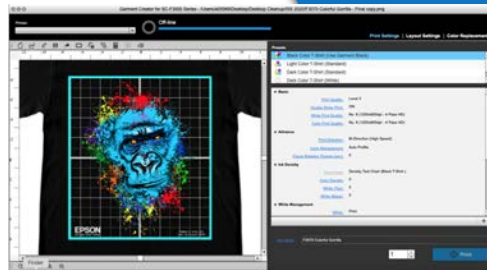


SureColor F3070



UltraChrome DG Inks

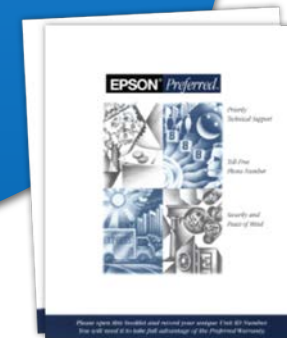
All key components have been developed in-house by Epson to deliver the best performance.



Garment Creator Software



Epson Precision Dot technology



Epson Service Plans



Specifications are subject to change without notice

Print speeds for the SureColor F3070 are based on print engine speed only, in bi-directional mode. Total throughput times depend upon front-end RIP, file size, printer resolution, ink coverage, networking, etc.

The SureColor F3070 is designed to use only Epson ink cartridges and refill packs and no other brands of new or refilled cartridges, or other brands of ink or bulk ink systems. Using Epson ink is important for reliable performance and high image quality.

*Oeko-Tex Standard specifies testing criteria for the presence of harmful substances within a textile product. The standard belongs to the International Association for Research and Testing in the field of Textile Ecology (Oeko-Tex).

Epson, Epson UltraChrome, PrecisionCore, and SureColor are trademarks or registered trademarks and EPSON Exceed Your Vision is a registered logo mark of Seiko Epson Corp.

All other product brand names are trademarks and/or registered trademarks of their respective companies. Epson disclaims any and all rights to these trademarks.

© Epson America, Inc. 2020 TC 08.21.20